

LETTER OF TRANSMITTAL

TO:

Angie Thompson, Board Administrator

Effingham County Board Office

Window Project

101 North Fourth Street, Suite 301

Effingham, IL, 62401

George Proksha Jr dba Superior Window Company

P: 618-533-6349 F: 618-533-5719

Email: georgejr@superiorwindowsandsiding.com

REFERENCE: Window Project

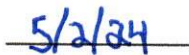
DATE: May 1, 2024

The following proposal is being Submitted by Superior Window Company located in Centralia Illinois. Superior is a full service home improvement company with 36 years of experience replacing residential and commercial windows, doors and exterior siding.

Sincerely,



Signature



Date

Enclosures: Proposal, Specifications, Insurance, References, Terms and Conditions

PROPOSAL

Superior Window Company to provide and install (96) Columbia 3000 series replacement windows in the Effingham County Building. The windows are bronze aluminum inside and out, are double hung in style, have 7/8" double insulated glass with Low E tint/Argon gas filling, full aluminum screens, no internal grids or obscure glass. Superior to remove all of the existing aluminum capping and windows from the (96) openings to prep the area for the new windows. The existing openings will require 1/2" x 3 1/4" x 70" strips of wood to be placed on both sides of the new windows inside of the current wood frames. All existing openings currently have a 3' wide by 1' deep by 6" tall void that will require R-13 fiberglass insulation to fill said void to eliminate air infiltration from under/around the new window units. Once the openings are prepped according to the previous steps mentioned above, the windows are to be installed in the openings, fastened with screws, and insulated around the perimeter with fiberglass insulation. Superior to then custom bend matching bronze aluminum to cap all (96) exterior frames. All exterior capping will be sealed to the brick and to the window using Solar Seal #900 Terpolymer Elastomer sealant.

All exterior capping and window work will be done using a motorized lift on the east and south side of the building and scaffolding on the north side from the first story rooftop. Superior will follow OSHA guidelines having a harness and lanyard attached to all workers on the lift and scaffolding. Hard hats, safety vests and steel-toed boots to be worn by all workers doing window work. All walkways will be cordoned off to protect the public from being able to walk into the work areas.

Superior to use the existing bronze aluminum trim currently in place on the new replacement window ensuring no damage to the interior of the building.

Superior to clean up the work areas daily and haul away all work-related debris from the jobsite.

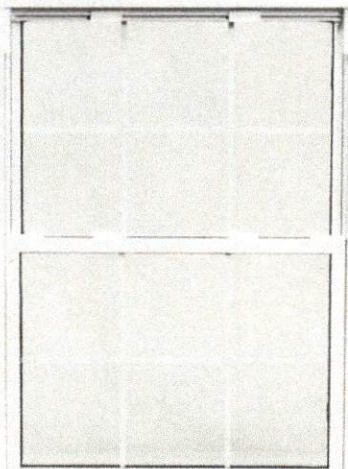
Price of **\$196,421.00** includes all material, labor, equipment, disposal.

12-16 weeks to manufacture the windows.

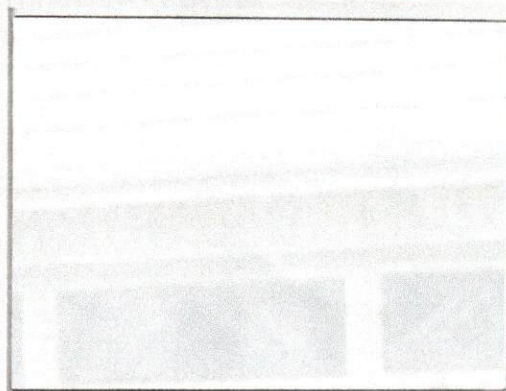
3-5 weeks for installation depending on the availability to work in each area during work hours. Superior is available to work on the weekends to help not disrupt everyday work in the building.

Columbia ARCTIC MASTER

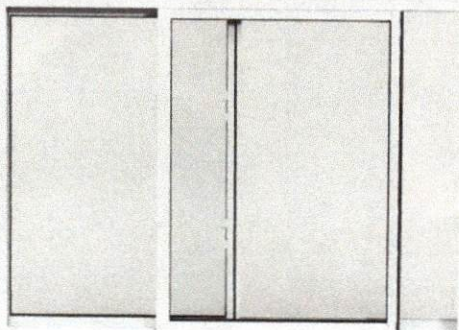
for Rehab & New Construction



C-3000 Double Hung



C-3200 Picture Window



C-3100 Horizontal Slider (Rolling)

The Columbia Arctic Master Series Thermal Break is the all-purpose window for new construction and rehab for both commercial and residential. Columbia has the industry's finest constructed, most attractive and versatile window in the market place.

SPECIAL FEATURES:

Thermal break minimizes heat flow and condensation on frame.

Thermal barrier yields big savings in fuel and air conditioning costs.

Glazed with 7/8" insulated glass dual or triple glazed.

Optional divided lites provided by dust-free muntin bars sealed between insulated glass.

Greatly reduces noise transfer.

Meets AAMA 1504-83 thermal performance standards.

Heavy duty cam lock tightens the sash meeting rail, sealing out air as it locks the window.

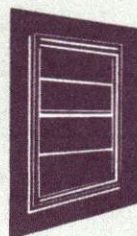
Full 3-1/4" thick frame depth.

Horizontal & vertical mullion system.

Heavy-duty tubular extruded screen frame.

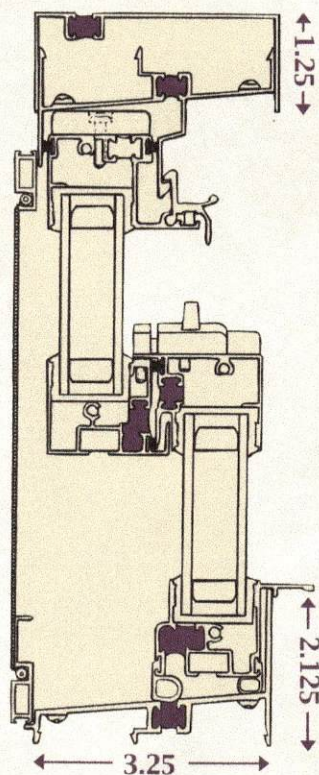
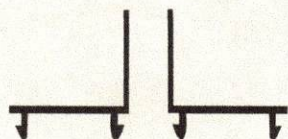
Continuous nailing fin for new construction windows.

High-performance poly bond fin seal weatherstripping.



Columbia
Windows & Doors

Nail fin for new construction.
Reverses for retro fit.

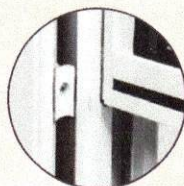


SIDE VIEW

Maintenance free
painted finish

Upper sash lock

Easy access
security latch
at meeting rails

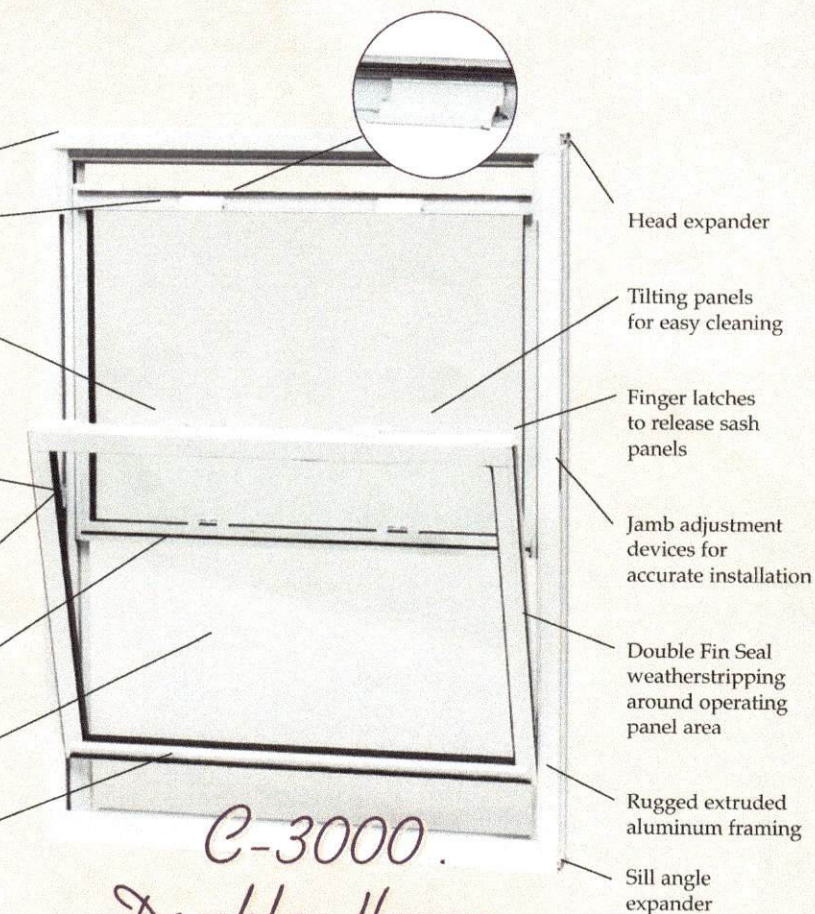


Constant force
tape balance

Full interlock at
meeting rails

7/8" insulated
glass panels

Full-length lift
rails on sash
panels



Head expander

Tilting panels
for easy cleaning

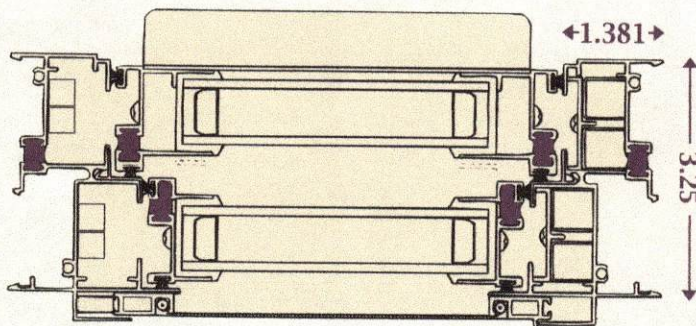
Finger latches
to release sash
panels

Jamb adjustment
devices for
accurate installation

Double Fin Seal
weatherstripping
around operating
panel area

Rugged extruded
aluminum framing

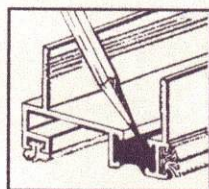
Sill angle
expander



TOP VIEW

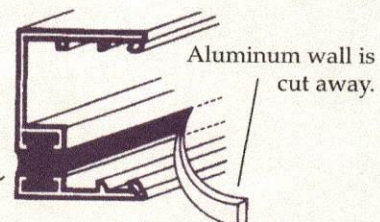
How our thermal break works --

There is NO direct metal connection inside and outside of window.

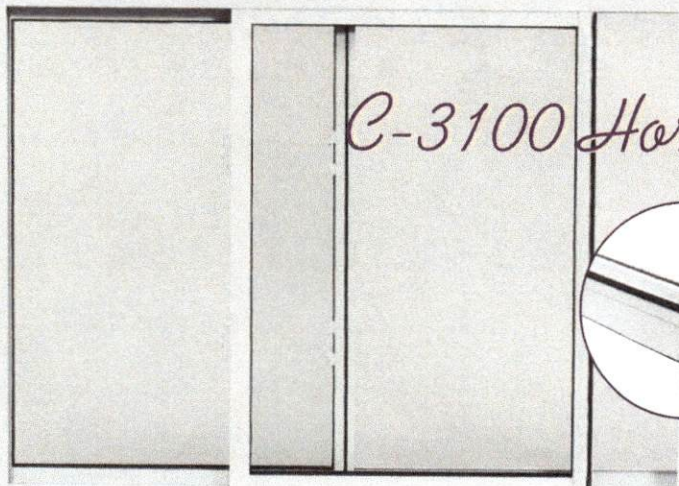


A polyurethane barrier, in the frame
and sash, virtually eliminates heat
loss and condensation buildup on
the interior frame.

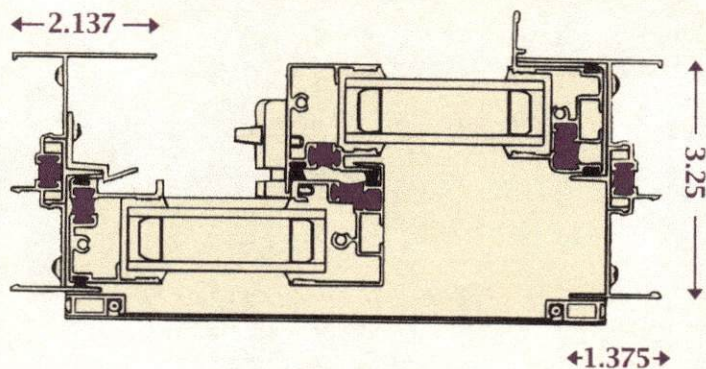
Channel is filled with strong
high-density plastic (polyurethane)



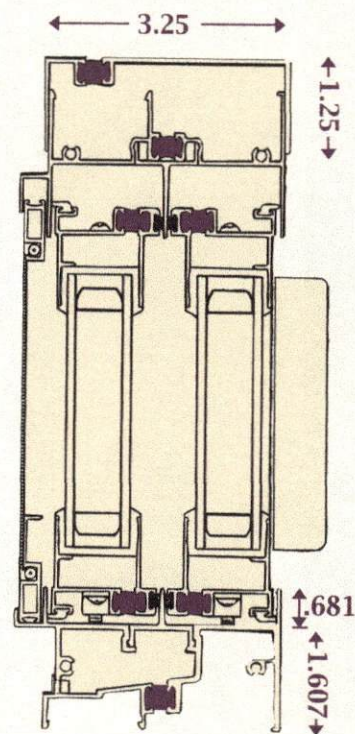
C-3100 Horizontal Slider (Rolling)



Four adjustable rollers on each sash provide ease of operation. Rollers are rust-free bronze to assure years of service.



TOP VIEW



SIDE VIEW

Mullion

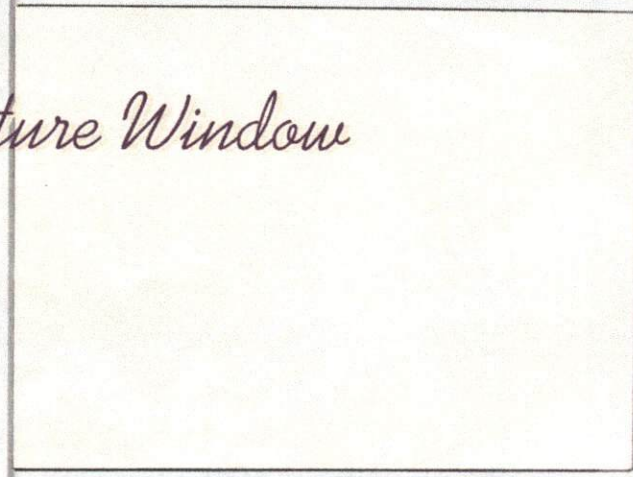
Thermal Break



The Artic Master series is complimented with a mullion system that allows side-by-side mulling & vertical mulling (stacking).

C-3200 Picture Window

(Fixed Lite)
May also be used as a transom over an operating window.



ALL ARE AVAILABLE IN WHITE OR BRONZE PAINTED FINISH.



Columbia
Windows & Doors

Specifications

GENERAL: The Columbia Arctic Master C-3000 Double Hung-Tilt (DH-C40), C-3100 Horizontal Slider (Rolling) (HS-C40) and C-3200 Picture Window (F-HC40) shall comply and bear the quality certification label in accordance with ANSI/AAMA Certification Program (101-85).

MATERIAL: Frame and sash shall be integral thermal-break insulated aluminum of 6063-T5 alloy. Sill wall thickness shall be .078" thick.

FINISH: Windows to be finished in bronze or white electrostatically applied enamel finish.

CONSTRUCTION: All joints of frame and sash members shall be neatly fitted, securely connected and permanently watertight. Thermal break shall separate the interior from the exterior. The operating sash shall interlock at meeting rail and sash shall not be removable in closed and locked position.

WEATHERSTRIPPING: Weatherstripping shall be silicon treated, fungus, mildew and moth resistant high-performance poly bond fin seal with a permanent poly fin in the middle of the poly pile to minimize air infiltration. The poly pile weatherstripping shall use a poly bond backing to insure against shrinkage.

HARDWARE: Window shall be factory equipped with a sweep-type, cam-action lock that tightens the meeting rail as it locks the window.

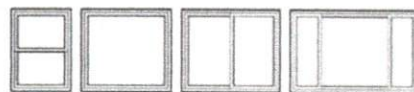
SCREENS: Half screens or full screens may be furnished with Arctic Master series. Screen frames are of hollow type extruded aluminum and shall be securely fastened at corners. Screen cloth shall be 18 x 16 mesh fiberglass. Aluminum wire available at an extra cost.

INSTALLATION: All window frames shall be set in accordance with the manufacturer's recommendations without springing, forcing or distorting. Head and sill shall be aligned parallel and square with jambs. A non-hardening sealant compatible with aluminum shall be provided by the window erector, and applied in sufficient quantity to provide a watertight seal between window and surrounding construction. Manufacturer assumes no liability for damage by the trades or final cleaning of aluminum.

GLAZING: All windows shall be glazed with clear 7/8" dual insulated glass, set in wrap-around vinyl (marine glazing). Also available with bronze-tinted glass, low E, triple glazing and muntin bars between the glass at an extra cost. The insulated glass shall be manufactured under the trade name "thermo cell" and shall meet or exceed ASTM E 773-83 and ASTM E 774-84A Class A.

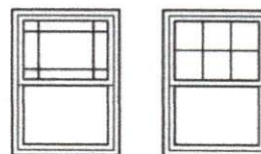
GUARANTEE: The windows and components as represented on these pages are unconditionally guaranteed against defective material or workmanship for one year provided that the installation is in accordance with the manufacturer's specifications and instructions.

Configurations



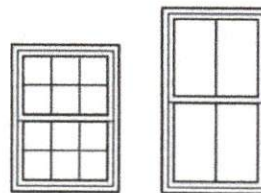
Double Hung, Picture Window, Slider (Rolling) Window, Slider (Rolling) Picture Window -- End Vents

Grid Patterns



Prairie

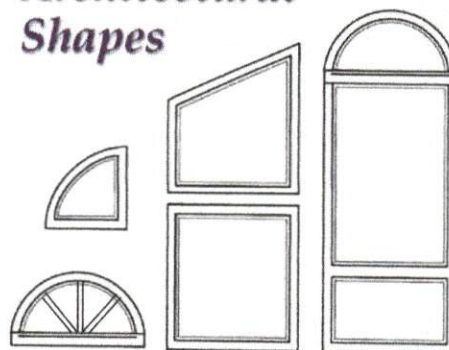
Traditional



Colonial

Victorian

Architectural Shapes



Your imagination isn't limited by the four corners of the window frame -- not with all the available options and accessories such as circle tops, trapezoids & 1/4 circles.

Lindsborg, KS
(785) 227-3087 • 1-800-255-0174

Iola, KS
(620) 365-3166 • 1-800-362-0503

Pawnee, OK
(918) 762-3001 • 1-800-722-4144



Columbia

Windows & Doors

1600 North Jackson
Kansas City, Missouri 64120

816-241-5800

Toll Free 1-800-892-8703

Distributed By:

COLUMBIA GLASS AND WINDOW COMPANY

Limited Warranty - Aluminum Windows

This is to certify that Columbia Aluminum Windows are warranted to be free from defects in workmanship and material for a period of ten years from date of installation.

For a period of ten years from date of manufacture: Columbia Glass warrants peeling or chipping of painted finish on frame not to occur.

For a period of ten years from date of manufacture: Columbia Glass warrants material obstruction of vision resulting from film formation between the interior glass of the insulated unit not to occur.

Columbia Glass warranty is valid provided that: (1) windows have received reasonable and necessary maintenance; (2) the windows have not been abused or tampered with; (3) the insulated glass unit must not have been subjected to stress resulting from localized application of heat leading to excessive temperature differentials over the glass surface or edges; (4) the glass has not been cracked or broken.

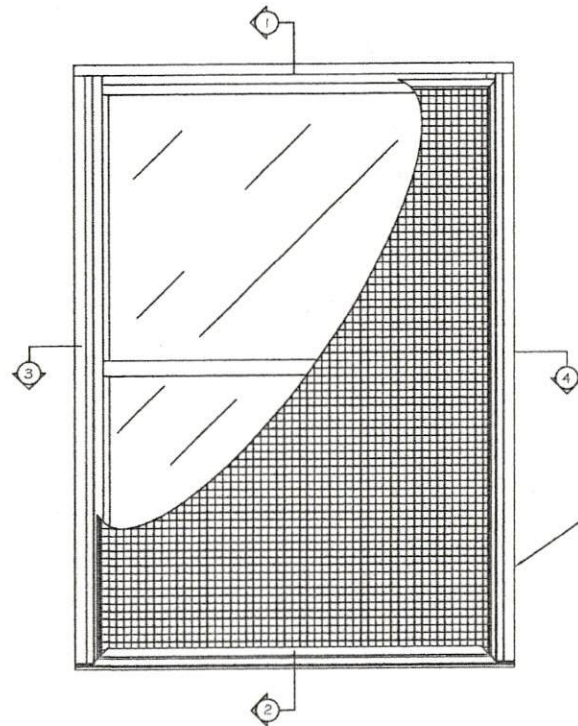
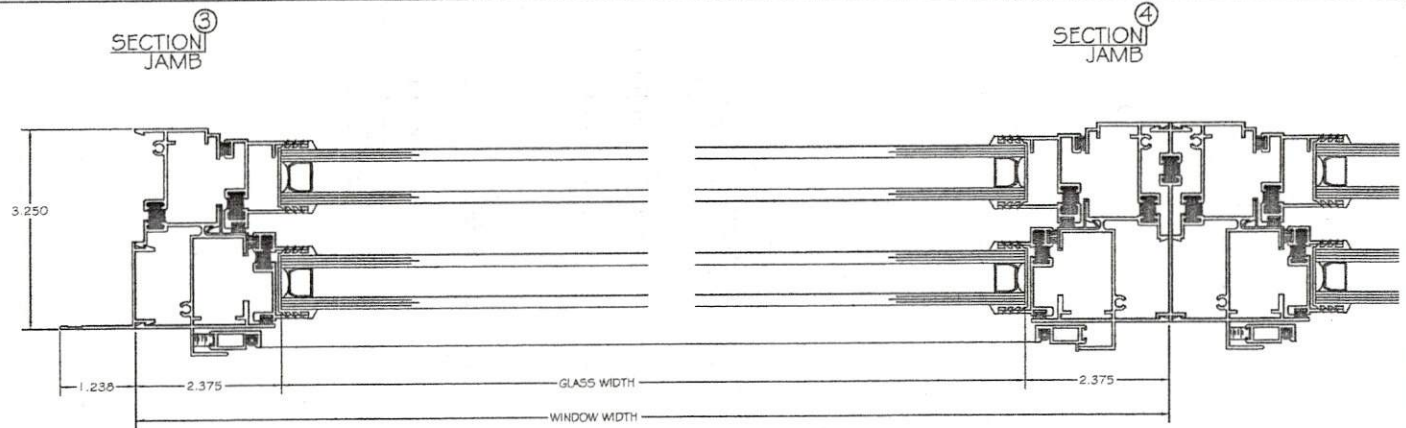
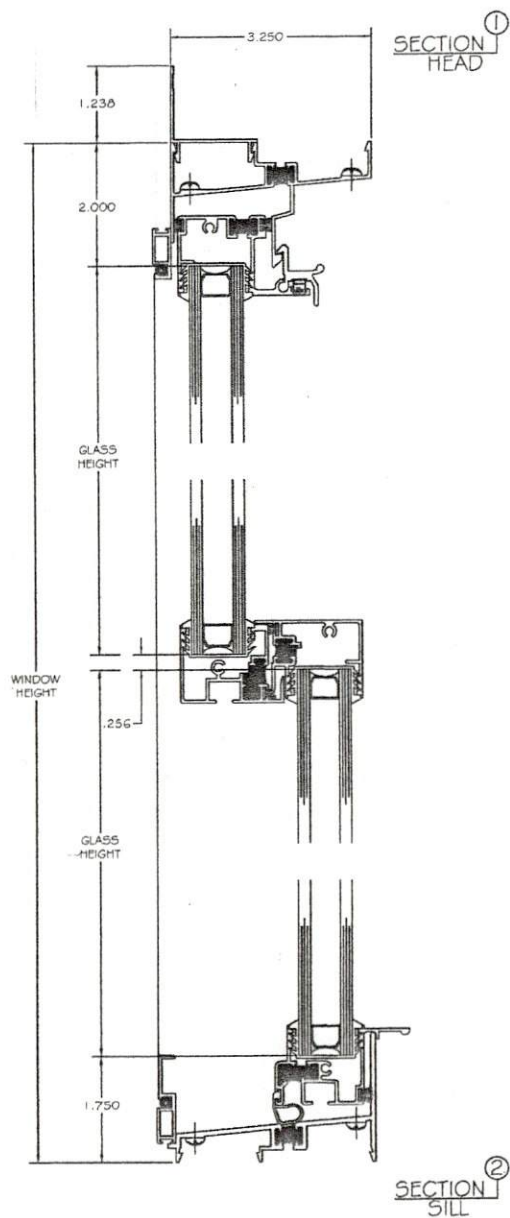
Columbia Glass warranty covers materials and labor. Columbia Glass is not liable for natural weathering of exterior finishes or for corrosion in highly corrosive environments. Columbia Glass is not liable for incidental or consequential damage. Factory warranty does not cover the breakage of glass or screen for any reason.

This warranty extends only to the person(s) identified as owner(s) and is in lieu of all other express warranties. Any implied warranties are limited in duration to the respective time period set forth above.

Consequential damage, loss or injury due to any defect in materials and workmanship is excluded from this warranty.

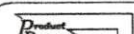
Some states do not allow limitations on how long an implied warranty lasts or the exclusion or limitation of incidental or consequential damage, so the above limitation or exclusion may not apply to you.

Within 30 days of receipt of written notice Columbia Glass will contact owner(s) to arrange for inspection. Columbia Glass will repair or replace, for one year from date of installation of the window, any part determined to be defective. Provided defect is reported to Columbia Glass within 60 days of the time the defect was discovered by the warrantee.



EXTERIOR ELEVATION

MODIFY SCALE X 5 FOR
ACTUAL SIZE OF WINDOW

	COLUMBIA GLASS		
	Designed By:	PLS	Date: 2-24-06
	Checked By:		Date:
	Drawn By:	PLS	Date:
	Part Name:	ASSEMBLY	
Phone No: 717-741-4644	Project Title: DOUBLE HUNG TILT		
Fax No: 717-741-4625	Project No: 3425-A-09		
E-mail: pddi@blazenet.net	Version: C-3000		

NOTICE OF PRODUCT CERTIFICATION

CERTIFICATION NO: NI006401-R7
DATE: 01/31/2006
CERTIFICATION PROGRAM: Structural
COMPANY: Columbia
CODE: 790-1
REVISION DATE: 05/21/2019

To verify that the "Notice of Product Certification" is valid, please visit www.NAMICertification.com to assure that the product is active and currently listed. This certification represents product conformity to the applicable specification and that certification criteria has been satisfied. A NAMI approved certification label must be applied to the product to claim certification status. Please review and advise NAMI if any corrections are required to this document.

COMPANY NAME AND ADDRESS	PRODUCT DESCRIPTION
Columbia Metal Products Company Riverside Park Iola, KS 66749	Series "C-3000" Aluminum Double Hung Window Configuration: XX Glazing: Insulating Glass (Annealed) Frame: W - 1346mm(53") H - 965mm(38") Panel: W - 1270mm(50") H - 965mm(38")

SPECIFICATION	PRODUCT RATING
ANSI/AAMA/NWWDA 101/I.S.2-97	H-C40

Product Tested By: Patzig Testing Laboratories
Report No: 384-0184.3 Rev
Expiration Date: May 31, 2021

Administrator's Signature: _____

A handwritten signature in dark ink, appearing to be "Shi" or similar, written over a horizontal line.

**NATIONAL ACCREDITATION AND
MANAGEMENT INSTITUTE, INC.**
4794 George Washington Memorial Highway
Hayes, VA 23072
Tel: (804) 684-5124
Fax: (804) 684-5122



NFRC Product Certification Authorization Report

Manufacturer: Columbia Glass & Window

Product Series: C3000 Aluminum Double Hung

Simulation Lab: SNCT

Initial Cert. Date: 01/12/2008

Street: 1600 North Jackson

Product Type: VSDH

Sim. Report #: NCTL-110-19191-1

Re-Certification Date: 06/29/2017

City/State/Zip: Kansas City, MO 64120

Air Leakage: ≤ 0.3

Sim. Report Date: 10/20/2016

Revised Date: 01/01/1970

Print Date: 06/29/2017

Test Date: 04/25/2017

Expiration Date: 04/25/2022

CPD Number: CGW-M-10

IA: National Accreditation And Management Institute

Status	Product Num	Manufacturer Code	Frame/ Sash	Glass Lyr	Low E (Surface)	Gap Width(s)	Spacer	Gap Fill	Gross	Dividers	Tint	U-Factor	SHGC	VT	Cond. Res
	00020-00001	3 mm Clear/AIR/3 mm Clear	AU/AU	2		0.639	P1-S	Fill 1: AIR(100)	N		CL	0.59	0.62	0.64	37
	00020-00002	3 mm Clear/AIR/3 mm Clear	AU/AU	2		0.639	P1-S	Fill 1: AIR(100)	G	0.75	CL	0.59	0.55	0.57	37
	00021-00001	3 mm Comfort Select 367/ARG/3 mm Clear	AU/AU	2	0.027(2)	0.639	P1-S	Fill 1: ARG/AIR(90/10)	N		CL	0.42	0.29	0.52	39
	00021-00002	3 mm Comfort Select 367/ARG/3 mm Clear	AU/AU	2	0.027(2)	0.639	P1-S	Fill 1: ARG/AIR(90/10)	G	0.75	CL	0.42	0.26	0.46	39
	00022-00001	3 mm Comfort Select 367/ARG/3 mm Comfort Select 73	AU/AU	2	0.027(2), 0.148(3)	0.639	P1-S	Fill 1: ARG/AIR(90/10)	N		CL	0.42	0.28	0.47	39
	00022-00002	3 mm Comfort Select 367/ARG/3 mm Comfort Select 73	AU/AU	2	0.027(2), 0.148(3)	0.639	P1-S	Fill 1: ARG/AIR(90/10)	G	0.75	CL	0.42	0.25	0.42	39
	00023-00001	3 mm ClimaGuard 70/36 LE/ARG/3 mm Clear	AU/AU	2	0.036(2)	0.639	P1-S	Fill 1: ARG/AIR(90/10)	N		CL	0.43	0.31	0.55	39
	00023-00002	3 mm ClimaGuard 70/36 LE/ARG/3 mm Clear	AU/AU	2	0.036(2)	0.639	P1-S	Fill 1: ARG/AIR(90/10)	G	0.75	CL	0.43	0.28	0.49	39
	00024-00001	3 mm ClimaGuard 70/36 LE/ARG/3 mm Comfort Select 73	AU/AU	2	0.036(2), 0.148(3)	0.639	P1-S	Fill 1: ARG/AIR(90/10)	N		CL	0.42	0.30	0.50	39
	00024-00002	3 mm ClimaGuard 70/36 LE/ARG/3 mm Comfort Select 73	AU/AU	2	0.036(2), 0.148(3)	0.639	P1-S	Fill 1: ARG/AIR(90/10)	G	0.75	CL	0.42	0.27	0.44	39
	00025-00001	3 mm Comfort Select 73/ARG/3 mm Comfort Select 73	AU/AU	2	0.148(2), 0.148(3)	0.639	P1-S	Fill 1: ARG/AIR(90/10)	N		CL	0.44	0.49	0.53	39
	00025-00002	3 mm Comfort Select 73/ARG/3 mm Comfort Select 73	AU/AU	2	0.148(2), 0.148(3)	0.639	P1-S	Fill 1: ARG/AIR(90/10)	G	0.75	CL	0.44	0.44	0.47	39
	00026-00001	3 mm LoE? 272 /ARG/3 mm Clear	AU/AU	2	0.042(2)	0.639	P1-S	Fill 1: ARG/AIR(90/10)	N		CL	0.43	0.33	0.56	39
	00026-00002	3 mm LoE? 272 /ARG/3 mm Clear	AU/AU	2	0.042(2)	0.639	P1-S	Fill 1: ARG/AIR(90/10)	G	0.75	CL	0.43	0.30	0.50	39
	00027-00001	3 mm LoE? 272 /ARG/3 mm Comfort Select 73	AU/AU	2	0.042(2), 0.148(3)	0.639	P1-S	Fill 1: ARG/AIR(90/10)	N		CL	0.43	0.32	0.51	39
	00027-00002	3 mm LoE? 272 /ARG/3 mm Comfort Select 73	AU/AU	2	0.042(2), 0.148(3)	0.639	P1-S	Fill 1: ARG/AIR(90/10)	G	0.75	CL	0.43	0.29	0.45	39
	00028-00001	3 mm LoE? 366/ARG/3 mm Clear	AU/AU	2	0.022(2)	0.639	P1-S	Fill 1: ARG/AIR(90/10)	N		CL	0.42	0.22	0.51	39
	00028-00002	3 mm LoE? 366/ARG/3 mm Clear	AU/AU	2	0.022(2)	0.639	P1-S	Fill 1: ARG/AIR(90/10)	G	0.75	CL	0.42	0.20	0.45	39
	00029-00001	3 mm LoE? 366/ARG/3 mm Comfort Select 73	AU/AU	2	0.022(2), 0.148(3)	0.639	P1-S	Fill 1: ARG/AIR(90/10)	N		CL	0.42	0.21	0.46	39

SOLAR SEAL® #900

TERPOLYMER ELASTOMER / ADHESIVE SEALANT

High performance colored alternative to silicones & urethanes



COMMERCIAL

INDUSTRIAL

HIGH END RESIDENTIAL

DESCRIPTION

SOLAR SEAL® #900 is based on terpolymer technology which offers a quality alternative to silicone and urethane sealants.

High performance terpolymer elastomers provides exceptional weather resistance, adhesion, elongation and color fade resistance to SOLAR SEAL® #900.

APPLICATIONS

Aluminum	Metal Buildings
Architectural Metals	Precast Panels
Asphalt Shingles	PVC Trim Boards
Brick & Masonry	Roof Flashing
Cedar & Redwood (primed)	Rubber Roofing
Copper	Skylights
Cured Concrete	Sun Rooms
EPDM/TPO	Termination Bars
EIFS Systems	Tile Roofing
Fiber Cement Board	Vinyl Siding & Windows
Glass & Fiber Glass	Wood
Kynar Coatings	+More Building Materials

COLORS

White, Black, Clear and over 200 NPC standard colors plus customs.

- ▶ Mfg. Name & Color stamped on each plunger.
- Custom colors available, 4 case min.

LIMITATIONS

- ⇒ Intended for exterior use. Interior application requires mandatory forced fresh air ventilation until odor dissipates.
- ⇒ Not recommended for:
 - Structural applications.
 - Contact with expanded polystyrene.
 - Joints under constant water submersion.
- ⇒ COMBUSTIBLE
 - Do not use near heat or flame.
- ⇒ Contact NPC for written approval for use in food processing areas.
- ⇒ Due to the porosity of cedar, redwood and hardboard, use on these substrates may reduce expected life.
- ⇒ Be aware that cedar is known to expel air as temperatures rise causing bubbles in freshly laid uncured sealants. Test all sealants on cedar, especially rough cut areas.
- ⇒ WARNING: This product contains chemicals known to the state of California to cause cancer and/or reproductive harm. Inform chemical sensitive persons this compound contains a petroleum solvent.

INSTALLATION

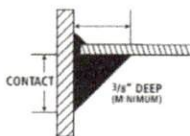
Apply 3/8" deep, (like diagram below) to a temperate, clean, dry, frost free, structurally sound surface that is free of oils, soaps, silicone, or loose material that may inhibit bonding. Clean excess sealant with a solvent such as xylene, mineral spirits or by scraping.

- ▶ Do not tool inside corner joints.
- ▶ Backer rod or bond breaker tape is required on control joints (butt joints) to prevent three point adhesion. Tool these control joints.
- ▶ Back caulk butt joints.
- ▶ Do not apply when substrate temperature is above 125°F.

Prior to application, obtaining the building owners approval of the sealant color is the applicator's responsibility.

JOINT DESIGN PARAMETERS

Maximum joint width is 3/4"
Maximum sealant depth is 1/2"
Minimum sealant depth is 3/8"



PROPER INSIDE CORNER CURED BEAD

Consumer size -Approx. coverage, 14 Lin. ft/tube
Pro Size -Approx. coverage, 26 Lin. ft/tube

GENERAL INFORMATION

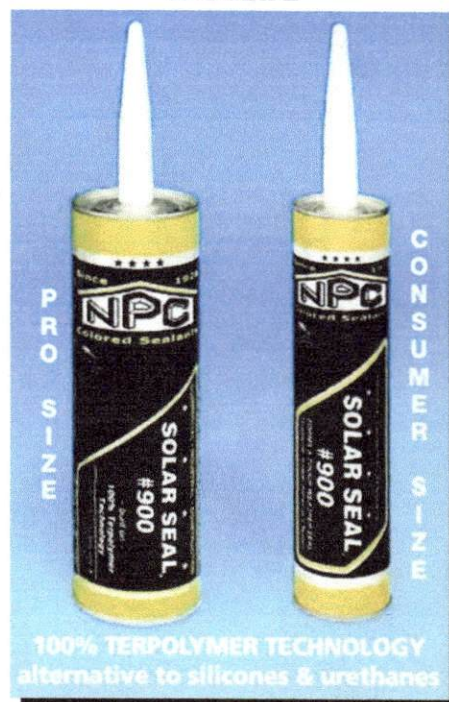
Shelf life: 2 Years @ 75°F
Substrate application range: 0°F to 125°F
Cured sealant temp. range: -40°F to 300°F
Cure rate @ 75°F: Thin skin: 24 hrs.
Complete cure: 21 days

- ▶ Warm tubes in cool weather
- ▶ Primerless adhesion
- ▶ Paintable after skin forms
- ▶ Mold and mildew resistant
- ▶ Stainable with solid color stains

PERFORMANCE DATA

BOND COHESION	TT-S-230c	NO BOND LOSS
SHORE A HARDNESS	TT-S-230c	30 AVERAGE
STAIN INDEX	TT-S-230c	NONE
SAG	TT-S-230c	NO SAG
UV & COLD EXPOSURE	ASTM-C 920	NO CRACKING
ELONGATION	ASTM-D 412	300%-400%
TACK FREE TIME	ASTM-C-679	4 hours
ADHESION-IN-PEEL	TT-S-1543	30 lbs/in

SPECIFICATION DATA



PACKAGING

Consumer size tubes (10.3 oz), 12 per case
Pro Size tubes (19 oz), 9 per case
5 gallon pails - 55 gallon steel drums

VOC Regulations

Pro Size tubes are approved under all Federal and State VOC regulations.

Consumer size tubes are approved under Federal VOC regulations and in all state VOC regulations except for California. Clear SOLAR SEAL® is approved in California.

- ▶ NO PCBs USED OR ADDED

CONSTRUCTION STANDARDS

Meets performance requirements of TT-S-00230c, Class A, Type II and ASTM C-920, Type S, Grade NS, Class 25, Use NT, except for weight loss. Follow ASTM C-1193.

LIMITED WARRANTY

NPC warrants Solar Seal® #900 will meet the performance data tests listed below, when judged according to the test methods listed below. Apply per ASTM C-1193. For best results on inside corner joints the user must follow our installation instructions and "Proper Cured Bead" diagram. For other joint designs the user must test the suitability prior to full application for his intended use and assumes all risks. Buyer's sole remedy shall be limited to the purchase price or replacement of product exclusive of labor or cost of labor. No other warranties implied or expressed shall apply, including any warranty or fitness for a particular purpose. NPC shall not be liable under any legal theory for special or consequential damage. Expected life: 20+ years on inside corner joints when installed as directed above.



American
Manufactured
and Owned

02/13



CERTIFICATE OF LIABILITY INSURANCE

DATE (MM/DD/YYYY)

02/06/2024

THIS CERTIFICATE IS ISSUED AS A MATTER OF INFORMATION ONLY AND CONFERS NO RIGHTS UPON THE CERTIFICATE HOLDER. THIS CERTIFICATE DOES NOT AFFIRMATIVELY OR NEGATIVELY AMEND, EXTEND OR ALTER THE COVERAGE AFFORDED BY THE POLICIES BELOW. THIS CERTIFICATE OF INSURANCE DOES NOT CONSTITUTE A CONTRACT BETWEEN THE ISSUING INSURER(S), AUTHORIZED REPRESENTATIVE OR PRODUCER, AND THE CERTIFICATE HOLDER.

IMPORTANT: If the certificate holder is an ADDITIONAL INSURED, the policy(ies) must have ADDITIONAL INSURED provisions or be endorsed. If SUBROGATION IS WAIVED, subject to the terms and conditions of the policy, certain policies may require an endorsement. A statement on this certificate does not confer rights to the certificate holder in lieu of such endorsement(s).

PRODUCER Dimond Bros. Insurance, LLC 201 S. Locust Centralia IL 62801		CONTACT NAME: Grinnell Care Center PHONE (A/C, No, Ext): (618) 532-5626 FAX (A/C, No): (618) 532-1531 E-MAIL ADDRESS:	
		INSURER(S) AFFORDING COVERAGE	
		INSURER A: Grinnell Mutual Reinsurance Co	
		INSURER B:	
		INSURER C:	
		INSURER D:	
		INSURER E:	
		INSURER F:	

COVERAGES **CERTIFICATE NUMBER:** CL242647402 **REVISION NUMBER:**

THIS IS TO CERTIFY THAT THE POLICIES OF INSURANCE LISTED BELOW HAVE BEEN ISSUED TO THE INSURED NAMED ABOVE FOR THE POLICY PERIOD INDICATED. NOTWITHSTANDING ANY REQUIREMENT, TERM OR CONDITION OF ANY CONTRACT OR OTHER DOCUMENT WITH RESPECT TO WHICH THIS CERTIFICATE MAY BE ISSUED OR MAY PERTAIN, THE INSURANCE AFFORDED BY THE POLICIES DESCRIBED HEREIN IS SUBJECT TO ALL THE TERMS, EXCLUSIONS AND CONDITIONS OF SUCH POLICIES. LIMITS SHOWN MAY HAVE BEEN REDUCED BY PAID CLAIMS.

INSR LTR	TYPE OF INSURANCE	ADD'L INSD	SUBR WVD	POLICY NUMBER	POLICY EFF (MM/DD/YYYY)	POLICY EXP (MM/DD/YYYY)	LIMITS
A	<input checked="" type="checkbox"/> COMMERCIAL GENERAL LIABILITY			0000676608	02/01/2024	02/01/2025	EACH OCCURRENCE \$ 1,000,000
	<input type="checkbox"/> CLAIMS-MADE <input checked="" type="checkbox"/> OCCUR						DAMAGE TO RENTED PREMISES (Ea occurrence) \$ 100,000
							MED EXP (Any one person) \$ 5,000
							PERSONAL & ADV INJURY \$ 1,000,000
	GEN'L AGGREGATE LIMIT APPLIES PER:						GENERAL AGGREGATE \$ 2,000,000
	<input type="checkbox"/> POLICY <input type="checkbox"/> PROJECT <input type="checkbox"/> LOC						PRODUCTS - COMP/OP AGG \$ 2,000,000
	OTHER:						Empl Practices Liab Ins \$ 100,000
A	AUTOMOBILE LIABILITY			0000676607	02/01/2024	02/01/2025	COMBINED SINGLE LIMIT (Ea accident) \$ 1,000,000
	<input type="checkbox"/> ANY AUTO OWNED AUTOS ONLY <input checked="" type="checkbox"/> HIRED AUTOS ONLY	<input type="checkbox"/> SCHEDULED AUTOS <input checked="" type="checkbox"/> NON-OWNED AUTOS ONLY					BODILY INJURY (Per person) \$
							BODILY INJURY (Per accident) \$
							PROPERTY DAMAGE (Per accident) \$
	UMBRELLA LIAB <input type="checkbox"/> EXCESS LIAB	<input type="checkbox"/> OCCUR <input type="checkbox"/> CLAIMS-MADE					EACH OCCURRENCE \$
	DED \$	RETENTION \$					AGGREGATE \$
A	WORKERS COMPENSATION AND EMPLOYERS' LIABILITY			0000676609	02/01/2024	02/01/2025	PER STATUTE <input type="checkbox"/> OTH-ER <input type="checkbox"/>
	ANY PROPRIETOR/PARTNER/EXECUTIVE OFFICER/MEMBER EXCLUDED? (Mandatory in NH)	Y/N <input type="checkbox"/>	N/A				E.L. EACH ACCIDENT \$ 1,000,000
	If yes, describe under DESCRIPTION OF OPERATIONS below						E.L. DISEASE - EA EMPLOYEE \$ 1,000,000
							E.L. DISEASE - POLICY LIMIT \$ 1,000,000

DESCRIPTION OF OPERATIONS / LOCATIONS / VEHICLES (ACORD 101, Additional Remarks Schedule, may be attached if more space is required)

DESCRIPTION OF OPERATIONS / LOCATIONS / VEHICLES (ACORD 101, Additional Remarks Schedule, may be attached if more space is required)	
--	--

CERTIFICATE HOLDER Marion County Housing Authority 719 E Howard Centralia IL 62801	CANCELLATION SHOULD ANY OF THE ABOVE DESCRIBED POLICIES BE CANCELLED BEFORE THE EXPIRATION DATE THEREOF, NOTICE WILL BE DELIVERED IN ACCORDANCE WITH THE POLICY PROVISIONS. AUTHORIZED REPRESENTATIVE
--	--

© 1988-2015 ACORD CORPORATION. All rights reserved.

REFERENCES

Langenfeld Hotel Properties

Chris Daniels 618-532-4400

104 W Broadway, Centralia, IL

Work: 60 vinyl double hungs in a 3 story brick hotel – pics included

The Citadel Building

Charles Yacob 847-489-5100

504 Tower Square, Marion, IL

Work: 110 vinyl double hungs in a 5 story brick building – pics included

Wayne County Courthouse

Donna Ensley, County Clerk 618-842-5182

301 E Court, Fairfield, IL

Work: 136 vinyl double hungs in a 3 story brick County Courthouse – pics included

Google Maps 104 W Broadway

Centralia, Illinois

Google Street View

Sep 2023 [See more dates](#)

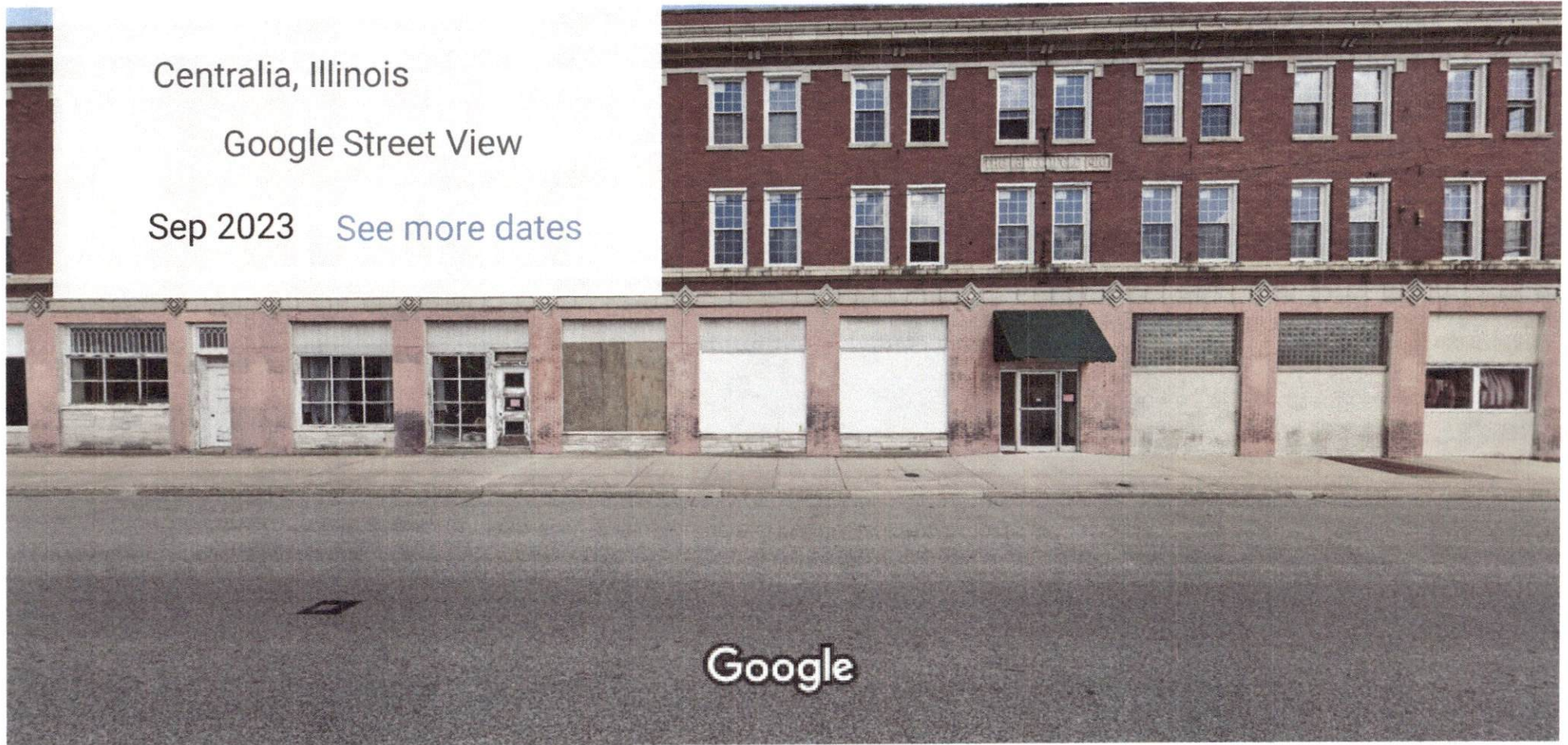


Image capture: Sep 2023 © 2024 Google

Google Maps 101 N Chestnut St

Centralia, Illinois

Google Street View

Nov 2022 [See more dates](#)



Image capture: Nov 2022 © 2024 Google

Google Maps 398 Tower Square Plaza

Marion, Illinois

Google Street View

Sep 2023 [See more dates](#)

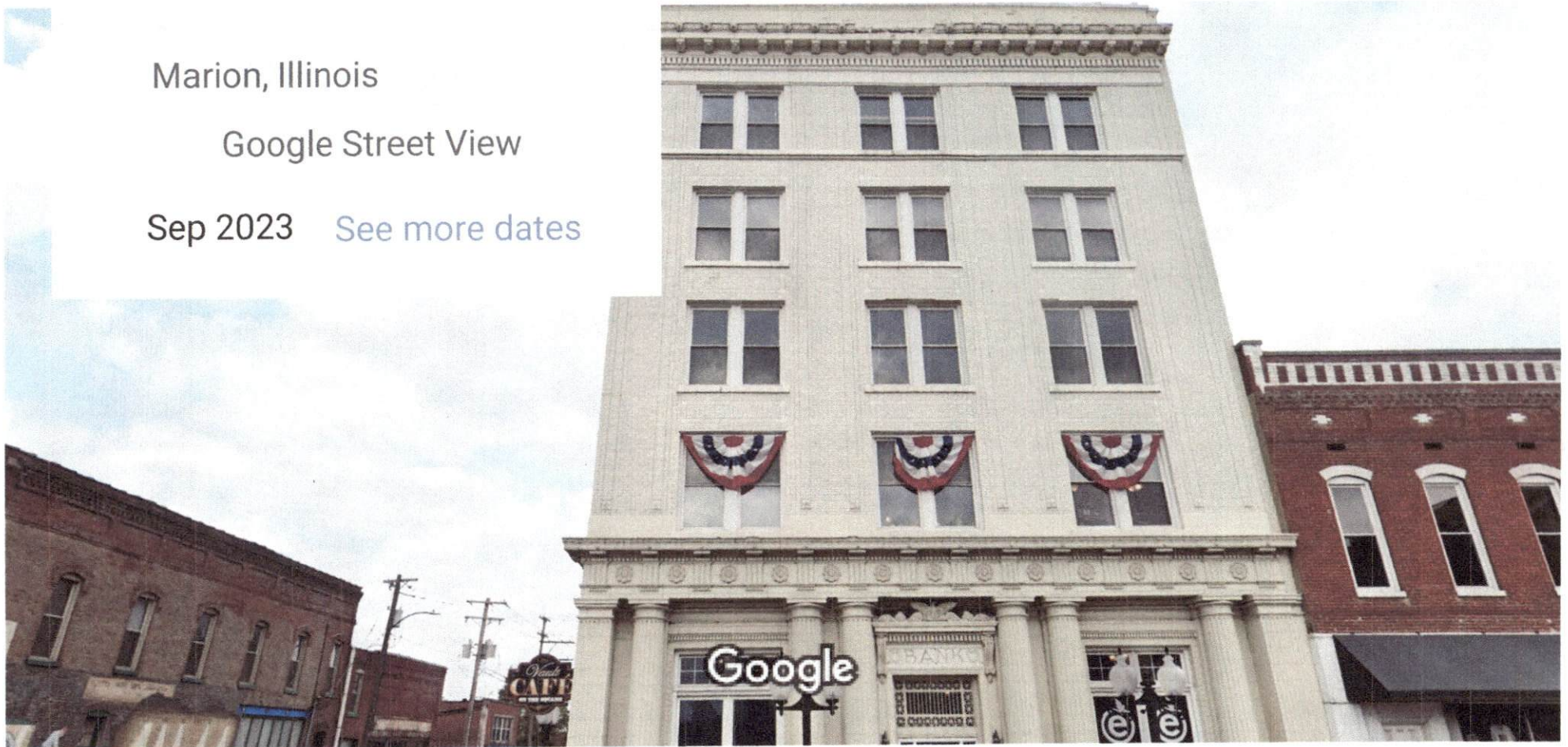


Image capture: Sep 2023 © 2024 Google

Google Maps 100 County Rd 13

Marion, Illinois

Google Street View

Sep 2023 [See more dates](#)

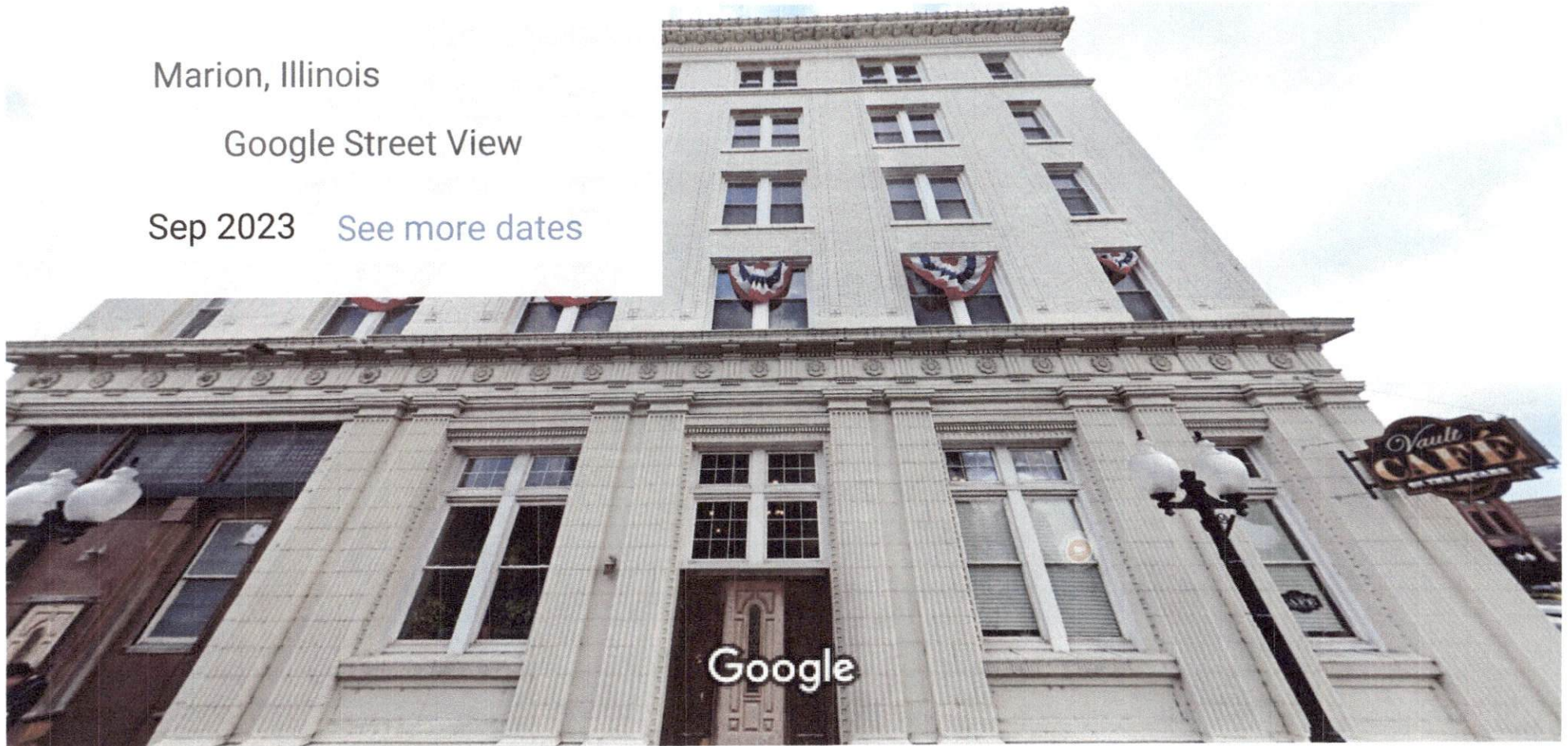


Image capture: Sep 2023 © 2024 Google

Google Maps 148 NE 3rd St

Fairfield, Illinois

Google Street View

Sep 2023



Image capture: Sep 2023 © 2024 Google

Google Maps 304 Main St

Fairfield, Illinois

Google Street View

Sep 2023 [See more dates](#)

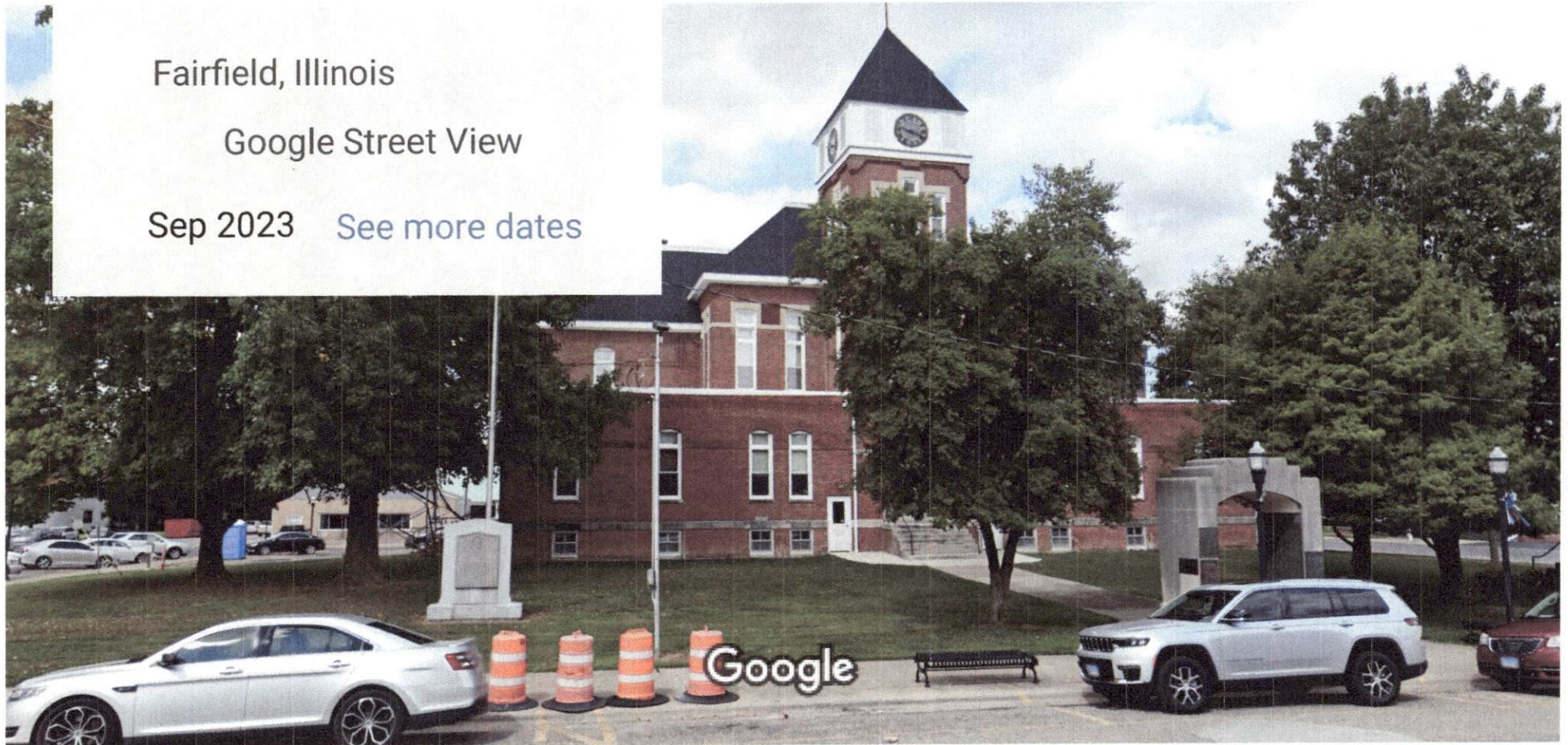


Image capture: Sep 2023 © 2024 Google

Google Maps 159 NE 4th St

Fairfield, Illinois

Google Street View

Sep 2023



Image capture: Sep 2023 © 2024 Google

Google Maps 308 Court St

Fairfield, Illinois

Google Street View

Sep 2023

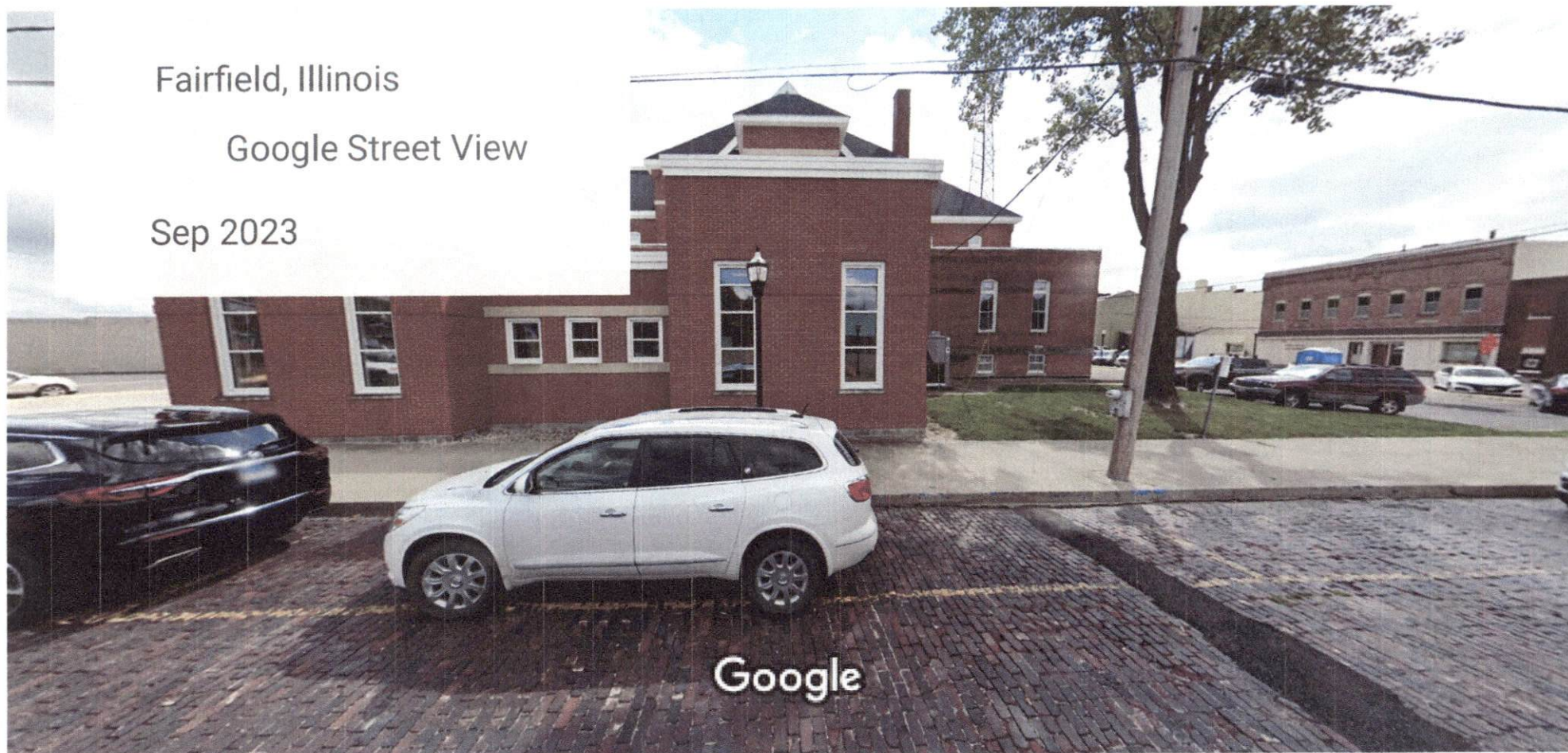


Image capture: Sep 2023 © 2024 Google

TERMS AND CONDITIONS SIGNATURE PAGE

1. **Installation:** Superior will be available for installation work any day of the week including Saturday and Sunday. Workers will only work (5) days a week but the weekend can be (2) of those days so as not to disrupt the workers in the performance of their jobs. In the event of an office being unavailable for work, the workers will need access to another office ASAP do as not to delay work. Superior would prefer to start on the top floor and work our way down completing one floor at a time if at all possible.
2. **Material disclaimer:** Superior will provide all materials needed for the work. All material remains the property of Superior as the workers will have more material than is needed to make sure there is no delay in work due to lack of material.
3. **Delay:** Superior shall be excused for any delay in completion caused by "acts of God"; inclement weather; acts of public utilities, public agencies, or inspectors.
4. **Subcontractors:** Superior may subcontract portions of this work to properly qualified subcontractors.
5. **Approximate Start and Completion Dates:** Superior will start the job after delivery of the windows which will be 12-16 weeks after the contract is agreed upon, signed and collection of the initial down payment. Completion of the job should take no longer than (5) weeks weather permitting.
6. **Contract Price:** The price of **\$196,421.00** includes all material, labor, equipment, disposal.
7. **Payment terms:** **Down payment:** **\$98,000.00** to be paid down upon signing the agreement and placing the work order for the new windows.

Schedule of Progress Payments: **\$32,807.00** to be paid after completion of the first set of (32) windows. **\$32,807.00** to be paid after completion of the second set of (32) windows. **\$32,807.00** to be paid after completion of the third set of (32) windows.

George G. Proksha Jr. DBA Superior Window Company
Contractor

OWNER
Title

5/2/24
Date

Accepting Agent

Title

Date