

DAN'S GLASS, INC
811 S. MAPLE ST.
EFFINGHAM, IL 62401

May 3, 2024

Effingham County Board Office
Window Project
101 North Fourth Street, Suite 301
Effingham, IL 62401

Dan's Glass, Inc. proposes the following for window replacement at the Effingham County Building:

Furnish and install in dark bronze anodized finish:

Winco Window - 4410 series single hung aluminum windows, with sweep lock, Ultra-Lift class 5 balancers, and screens

2nd Floor
32) 35" x 71"

3rd Floor
32) 35" x 67"

4th Floor
32) 35" x 66"

Glazed with 1" standard bronze insulated tempered low E glass with Argon fill

*Approximate sizes, exact window dimensions will be field verified

*Includes demo of existing windows

*Includes break metal trim around perimeter of exterior

*Includes snap trim/break metal trim around perimeter of interior

*Exclusions

-Any carpentry work due to unforeseen conditions with existing wood or other materials behind existing windows and metal trim

-Any drywall repair, sill repair, or painting

-Any masonry repair

- Any steel lintel repair, painting, or replacement
- Asbestos abatement or inspection

*Prevailing wage

*Tax Exempt

*Window lead time is approximately 16-18 weeks

*Potential start date: Late November-December

General Contractor References

- Akra Builders
- Wohltman Construction
- Grunloh Construction
- Swinger Construction
- Heritage Builders
- Grunloh Building

Sincerely,

Brandon Roedl
Vice President
Dan's Glass, Inc.

brandon@dansgi.com
217-342-9363



811 S. Maple St.
Effingham, IL 62401
Phone: (217) 342-9363
Fax: (217) 342-9306
E-Mail: dansgi@dansgi.com
Website: www.dansgi.com

Date	Quote #
5/2/2024	9912

Name / Address
EFFINGHAM COUNTY BUILDING 101 N. 4TH ST. EFFINGHAM, IL. 62401 ATTN: DENNIS

Job Name
Window Replacement

Item	Description	Qty	Rate	Total
BRONZE	<p>Furnish and install in dark bronze anodized finish:</p> <p>Winco 4410 series single hung aluminum windows, with sweep lock, Ultra-Lift class 5 balancers, and screens</p> <p>2nd Floor 32) 35" x 71"</p> <p>3rd Floor 32) 35" x 67"</p> <p>4th Floor 32) 35" x 66"</p> <p>Glazed with 1" standard bronze insulated tempered low E glass with Argon fill</p> <p>*Approximate sizes</p> <p>*Winco Window Warranty: 1 year window, 10 year insulated glass seal failure, 10 year anodized finish</p> <p>*Includes demo of existing windows *Includes break metal trim around perimeter of exterior *Includes snap trim/break metal trim around perimeter of interior</p> <p>*Exclusions -Any carpentry work due to unforeseen conditions with</p>	1	287,500.00	287,500.00

Subtotal

Total

Date of Acceptance _____

Signature _____



811 S. Maple St.
Effingham, IL 62401
Phone: (217) 342-9363
Fax: (217) 342-9306
E-Mail: dansgi@dansgi.com
Website: www.dansgi.com

Date	Quote #
5/2/2024	9912

Name / Address
EFFINGHAM COUNTY BUILDING 101 N. 4TH ST. EFFINGHAM, IL. 62401 ATTN: DENNIS

Job Name
Window Replacement

Item	Description	Qty	Rate	Total
	<p>existing wood or other materials behind existing windows and metal trim</p> <ul style="list-style-type: none"> -Any drywall repair, sill repair, or painting -Any masonry repair -Any steel lintel repair, painting, or replacement -Asbestos abatement or inspection <p>*Prevailing wage *Tax Exempt</p>			

ACCEPTANCE OF ESTIMATE / PROPOSAL: The above prices, specifications and conditions are satisfactory and are hereby accepted. You are authorized to do the work as specified. Any change orders will result in increase and/or decreases in price. QUOTED PRICES ARE GOOD FOR 10 DAYS. FINANCE CHARGES OF 2%/MONTH ON ACCOUNTS 30 DAYS PAST DUE. ANY UNPAID BALANCES ARE SUBJECT TO COLLECTION FEES AND ATTORNEY FEES PAYABLE BY CUSTOMER.

Subtotal \$287,500.00

Total \$287,500.00

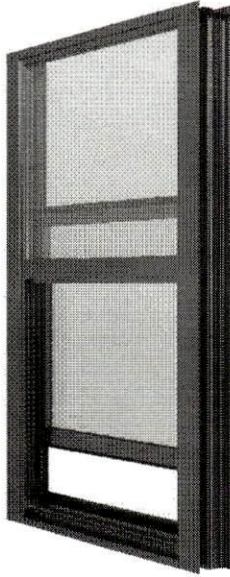
Date of Acceptance _____

Signature _____



Series 4410

4" Architectural Grade Window System
Fixed - Single Hung



Product Overview

The 4410 Series is a fixed and single hung window that will provide years of low maintenance performance. With 0.080" nominal wall thickness throughout the mainframe and sash and a 3/32" thick aluminum sill, the 4410 is up to the task that your project demands. The large window sash is no problem and will lift easily when using our class 5 balance system.

GREEN COMMITMENT

HISTORIC REPLICATION

NOISE CONTROL

BLAST SHIELD

WIND PROTECTION

Features & Custom Options

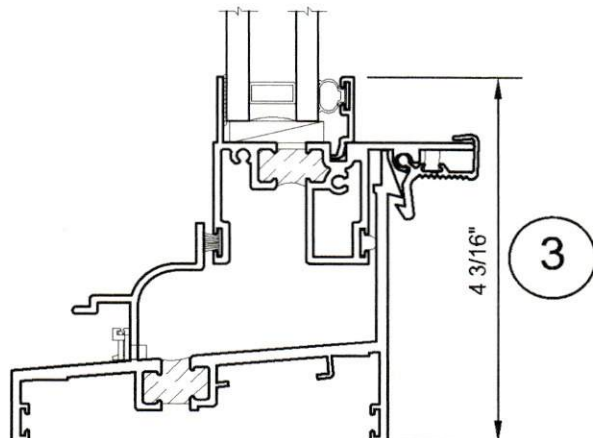
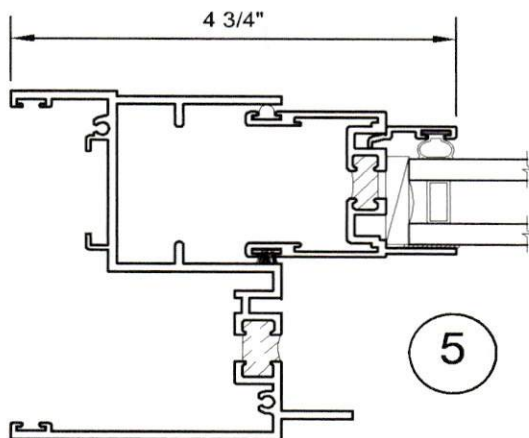
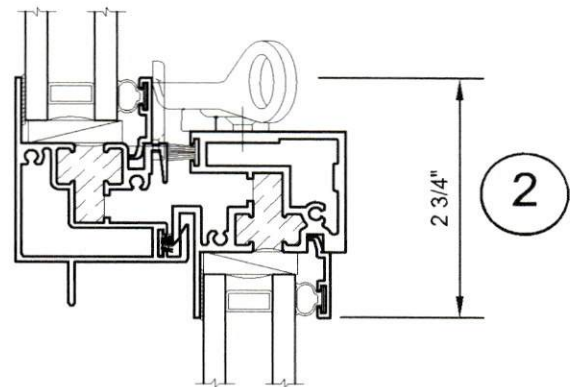
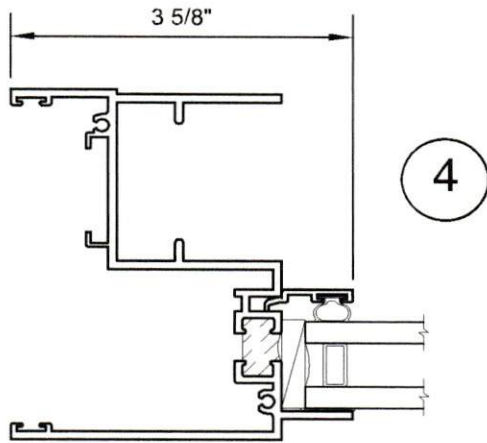
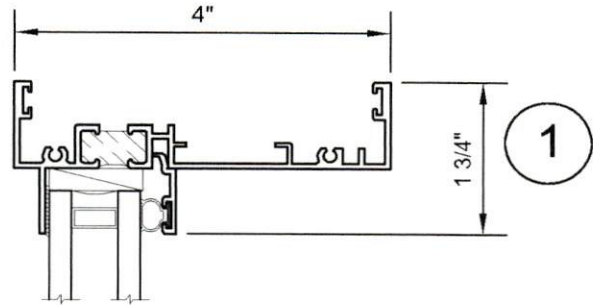
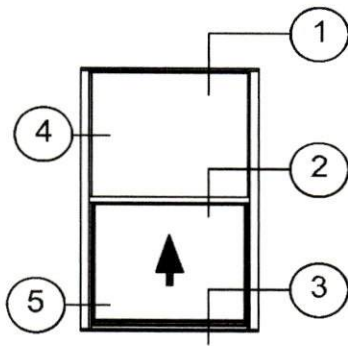
- Azon "Azo-Brader" thermally broken frame and sash, backed by a 10 year warranty against thermal break shrinkage
- Vertical and horizontal stacking members
- Integral lift handle on operable sash
- 4 sided fin seal weather-strip on the exterior
- Various glazing thicknesses available
- Dual glazing with optional integral blinds providing dynamic light control
- Accessory line of receptors, mullions, panning and trim for a customized look
- Blast, ballistic and impact glazing available
- Optional aluminum extruded screens
- Accompanying fixed frame options

Performance Data*

Type	Air (CFM/FT ² @ 6.24 PSF)	Water (PSF)	Structural (PSF)	CRF	U-Value (Btu/Hr-Ft ² -°F)	STC
AW-PG65-Hung	Less than 0.10	10 (Higher levels may be available upon request)	+/- 97.5	52*	0.41*	Contact your local Rep

*U-Value, CRF, Water and AW ratings are based on a particular type of glazing and window configuration being used. They are provided for comparison purposes only. They are based on products of standard configuration, tested in accordance with NFRC/FGIA/AAMA specifications, in a laboratory environment under optimum conditions. Performance values will vary according to project specifications, installation, size, configuration, hardware, glass, etc. Any required field testing should be done in accordance with the project specifications and FGIA/AAMA field testing protocol, not this data.

Series 4410 Detail Drawings



Winco Window Company
6200 Maple Avenue
St Louis, MO 63130

TESTING: Our products meet stringent testing requirements of both the American Architectural Manufacturers Association (AAMA) and the National Fenestration Rating Council (NFRC) standards and certification.

VER:210422

4410 Series 4" Thermal Fixed & Single Hung Windows

Product Information



WINCO RESERVES THE RIGHT TO MODIFY OR CHANGE INFORMATION WITHIN THIS BOOK WHEN DEEMED NECESSARY FOR PRODUCT IMPROVEMENT

PERFORMANCE

The Series 4410 window is a thermally broken mainframe and sash that exceeds the performance specification criteria as required by ANSI/AAMA for AW (Architectural Grade) windows.

Fixed			Single Hung		
AAMA Rating	AW-65		AAMA Rating	AW-65	
Air Infiltration	0.3 CFM/ft ²		Air Infiltration	0.02 CFM/ft ²	
Water	Over 12 psf		Water	Over 10 psf	
Structural	97.5 psf		Structural	97.5 psf	
CRF (AAMA 1503)	54		CRF (AAMA 1503)	52	
Center of Glass U-Value	Window U-Factor ³		Center of Glass U-Value	Window U-Factor ³	
BTU/Ft ² x F° x Hr	47" x 59" ²	60" x 99.5" ¹	BTU/Ft ² x F° x Hr	47" x 59" ²	60" x 99.5" ¹
0.20	0.34 ⁴	0.29 ⁴	0.20	0.49	0.41
0.24	0.37 ⁴	0.33 ⁴	0.24	0.50	0.42
0.29	0.41 ⁴	0.37 ⁴	0.29	0.53	0.44
0.34	0.45 ⁴	0.41 ⁴	0.34	0.55	0.45
0.47	0.55 ⁴	0.52 ⁴	0.47	0.62	0.50

This Information is based on current product design, sealed dual glazing, warm edge spacers and testing standards.

Please contact WINCO for project specific information

¹ AAMA 101 Test Size

² NFRC Gateway Test Size

³ Based on NFRC 100

⁴ Estimated performance

CONSTRUCTION

MATERIAL - The Series 4410 window is a 4" deep frame depth with a nominal wall thickness of 0.062 inch at the head and jamb members. The sill extrusion has a nominal wall thickness of 0.080 inch. The operable sash member is 1-5/8 inch deep with a nominal wall thickness of 0.062 inch. All material is extruded from 6063-T6 alloy.

THERMAL BREAK - All framing members of the window system are thermally broken. Winco uses the Azon Azo Brader® process to mechanically condition the surface of the thermal cavity. The process runs the entire length of the extrusion and creates serrations that insure proper adhesion of the structural polymer. The structural urethane is a high density 2 part formula providing optimum thermal performance for the most demanding conditions. The combination of the conditioning of the aluminum surface along with the two part urethane allows Winco to provide a full 10 year warranty against thermal break creep and shrinkage in accordance with AAMA 505-98.

WEATHER-STRIP - All operating sash have a heavy fin seal wool pile weather strip on the exterior for superior water and air performance. On the interior side of the sash, a rigid vinyl weatherstripping is used for ease of operation.

FABRICATION - The main frame corners are coped and mechanically joined using two stainless steel spline screws per corner (fig 1). The sash utilizes hollow tube shaped extrusions for superior strength and rigidity. The sash corners are coped and mechanically joined using two stainless steel spline screws per corner, aligning the members to form a hairline joint (fig. 2). All frame joints are back sealed with small joint sealer providing a water tight joinery.

WINCO RESERVES THE RIGHT TO MODIFY OR CHANGE INFORMATION WITHIN
THIS BOOK WHEN DEEMED NECESSARY FOR PRODUCT IMPROVEMENT

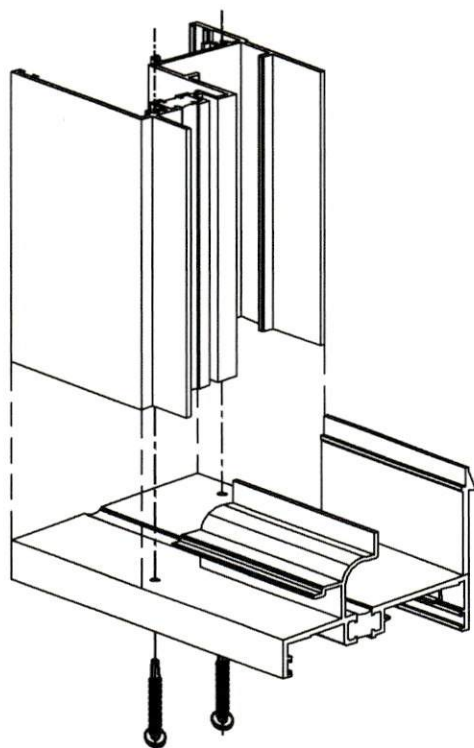
© WINCO WINDOW COMPANY, INC. 2020

4410 Series 4" Thermal Fixed & Single Hung Windows

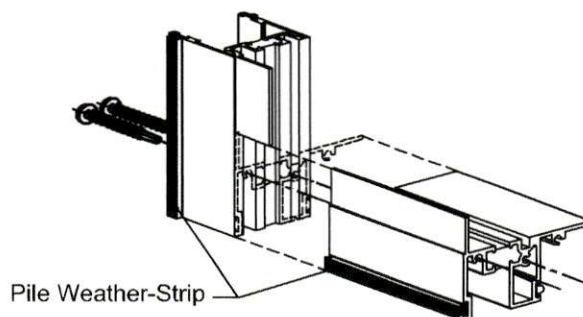
Product Information



WINCO RESERVES THE RIGHT TO MODIFY OR CHANGE INFORMATION WITHIN THIS BOOK WHEN DEEMED NECESSARY FOR PRODUCT IMPROVEMENT



(fig 1) Main Frame Construction



(fig 2) Sash Construction

GLAZING

The windows can be interior or exterior glazed with .050 thick extruded aluminum glazing beads accommodating thicknesses from 1/4" up to 1". Dual glazing is an option utilizing an interior panel sash with a take out sash. Venetian blinds are available with the dual glazed window option. See the quick reference chart below for all glazing options. For actual details refer to the glazing section in the back of the 4410 section for optional glazing and blind details.

Glazing Thickness	1/8"	3/16"	1/4"	5/16"	3/8"	1/2"	9/16"	5/8"	3/4"	7/8"	1"	1-1/4"	1-3/8"	1-1/2"
Monolithic	X	X	X	X	X	X	X	-	-	-	-	-	-	-
Insulated	-	-	-	-	-	-	-	X	-	X	X	-	-	-
Dual Glazed	Exterior	-	X	X	-	-	-	-	-	-	-	-	-	-
	Interior	X	X	X	-	-	-	-	-	-	-	-	-	-
Triple Glazed	Exterior	-	-	-	-	-	-	-	-	-	-	-	-	-
	Interior	-	-	-	-	-	-	-	-	-	-	-	-	-

Winco has different gaskets and glazing methods that can accommodate odd thicknesses of glass. If you do not see what you are looking for within this chart please contact your local representative for information regarding your specific project needs.

© WINCO WINDOW COMPANY, INC. 2020

4410 Series 4" Thermal Fixed & Single Hung Windows

Product Information



HARDWARE

All exposed sweep lock hardware and keepers are solid white bronze alloy with US25D brushed finish. All exposed springloaded snap lock hardware is manufactured from extruded aluminum matching the window frame finish.

	Spring Lock at Jamb	Spring Lock at Head	Spring Lock at Sill	Stainless Steel Wheel w/ SS Bearing	Nylon Wheel w/ Steel Bearing	Stainless Steel Track Cover	Sweep Lock	Access Control Sweep Lock	Class 5 Sash Balance (Ultralift)	Limit Stop (non removable, Extruded)	Limit Stop (Key- Release)			
Window Type														
Single Hung	-	-	X	-	-	-	X	O	X	O	O			

X = Standard Hardware

O = Optional Hardware

WINCO RESERVES THE RIGHT TO MODIFY OR CHANGE INFORMATION WITHIN THIS BOOK WHEN DEEMED NECESSARY FOR PRODUCT IMPROVEMENT

SCREENS

FRAME - frames are fabricated from 6063-T6 extruded aluminum alloy and temper. All screen frames are miter cut and corner keyed. The corners are mechanically crimped together for durability. The screen frame is finished to match the window frame.

MESH - Standard .011 aluminum screen wire mesh is produced from 5154 alloy with 18x16 pattern in Charcoal or Aluminum color. All mesh is applied to the screen frame with a roller spline making for easy and quick replacements. Optional fiberglass or .009 stainless steel mesh is available as an option.

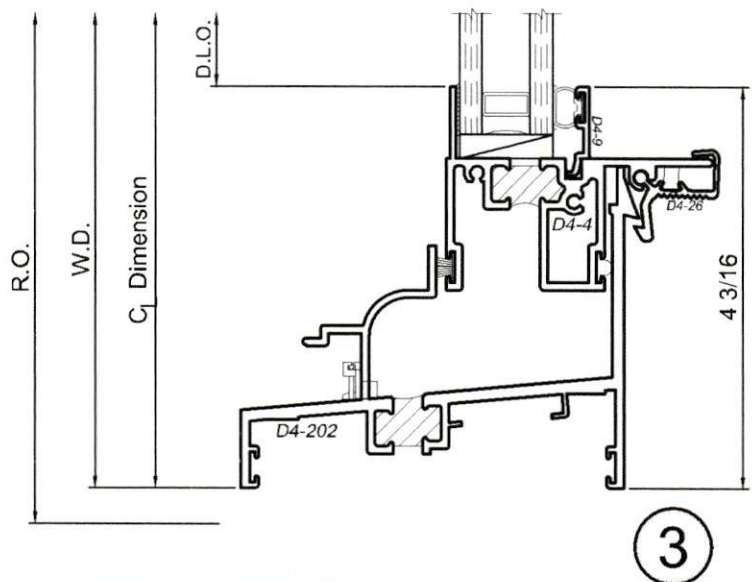
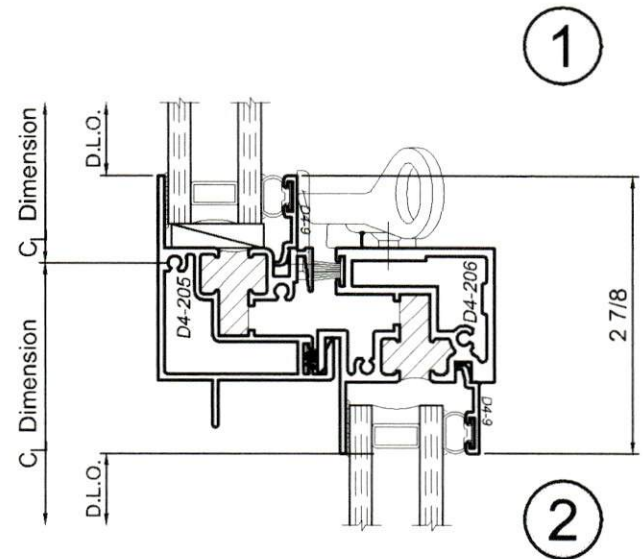
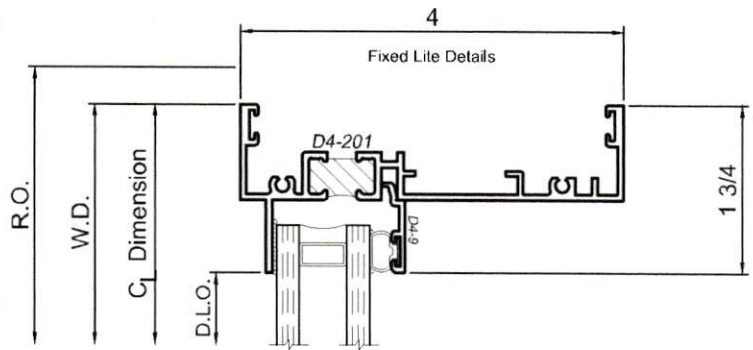
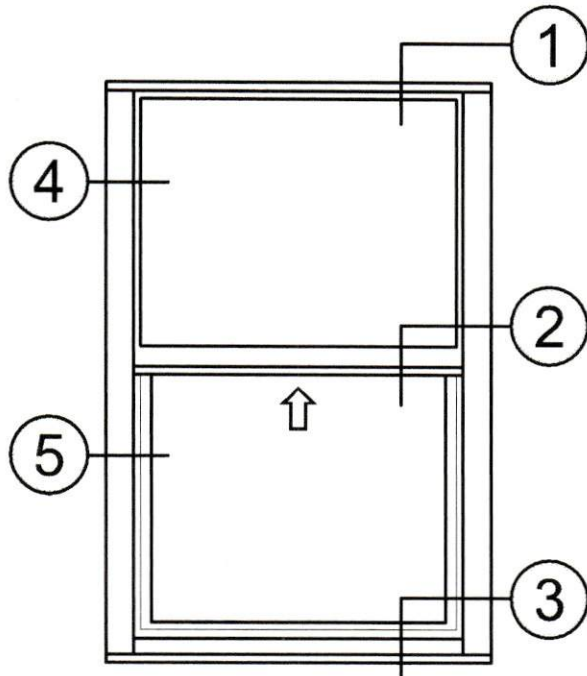
© WINCO WINDOW COMPANY, INC. 2020

4410 Series 4" Thermal Fixed & Single Hung Windows

Product Details - Single Hung Window Head and Sill Details



Note: Multiple configurations of this window system are available. Refer to the WINCO website for additional options or contact your local WINCO Sales Representative for information.



WINCO RESERVES THE RIGHT TO MODIFY OR CHANGE INFORMATION WITHIN THIS BOOK WHEN DEEMED NECESSARY FOR PRODUCT IMPROVEMENT

© WINCO WINDOW COMPANY, INC. 2020

SCALE 6"=1'-0"

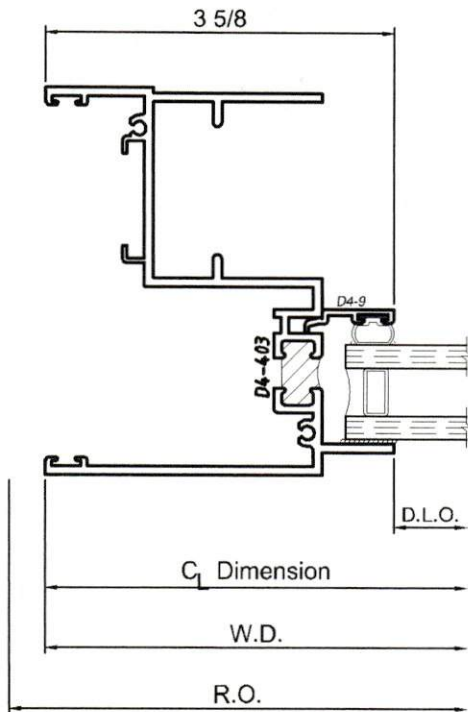
4410 Series 4" Thermal Fixed & Single Hung Windows

Product Details - Single Hung Window Jamb Details

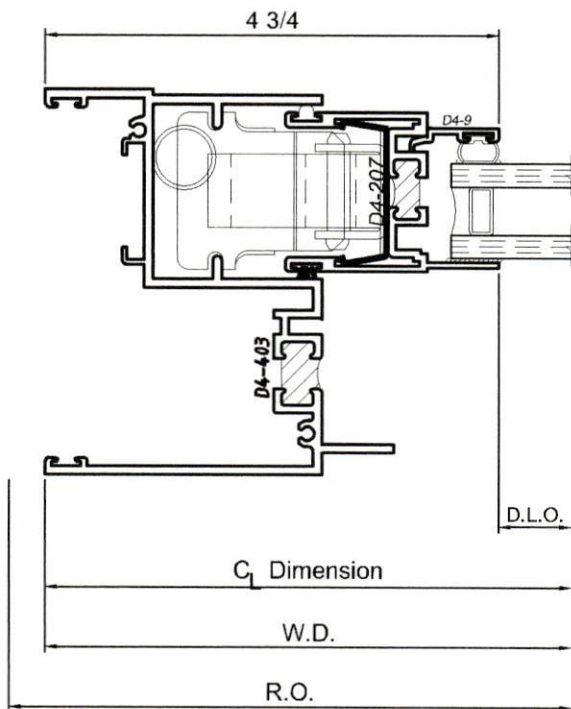


Note: Multiple configurations of this window system are available. Refer to the WINCO website for additional options or contact your local WINCO Sales Representative for information.

WINCO RESERVES THE RIGHT TO MODIFY OR CHANGE INFORMATION WITHIN THIS BOOK WHEN DEEMED NECESSARY FOR PRODUCT IMPROVEMENT



4



5

SCALE 6"=1'-0"

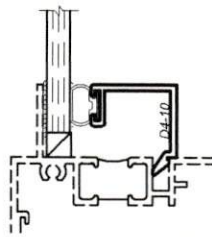
© WINCO WINDOW COMPANY, INC. 2020

4410 Series 4" Thermal Fixed & Single Hung Windows

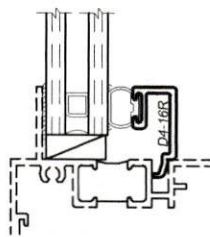
Product Details - Glazing Options



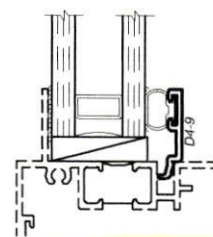
Note: Multiple configurations of this window system are available. Refer to the WINCO website for additional options or contact your local WINCO Sales Representative for information.



1/4" Glazing Bead
D4-10



5/8" Glazing Bead
D4-16R



1" Glazing Bead
D4-9

Note: Odd glass thicknesses may be possible by changing the gasket or the thickness of the glazing silicone. If desired glazing is not shown please contact your local Winco Sales Representative for additional information.

WINCO RESERVES THE RIGHT TO MODIFY OR CHANGE INFORMATION WITHIN THIS BOOK WHEN DEEMED NECESSARY FOR PRODUCT IMPROVEMENT

© WINCO WINDOW COMPANY, INC. 2020

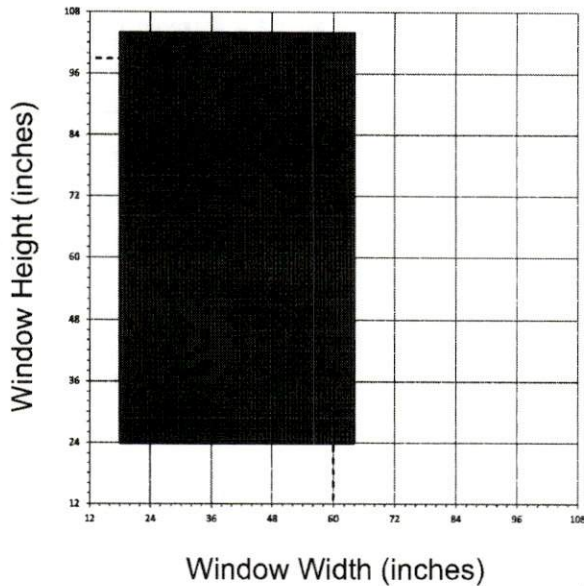
SCALE 6"=1'-0"

4410 Series 4" Thermal Fixed & Single Hung Windows Projected Vent Size Capabilities Charts

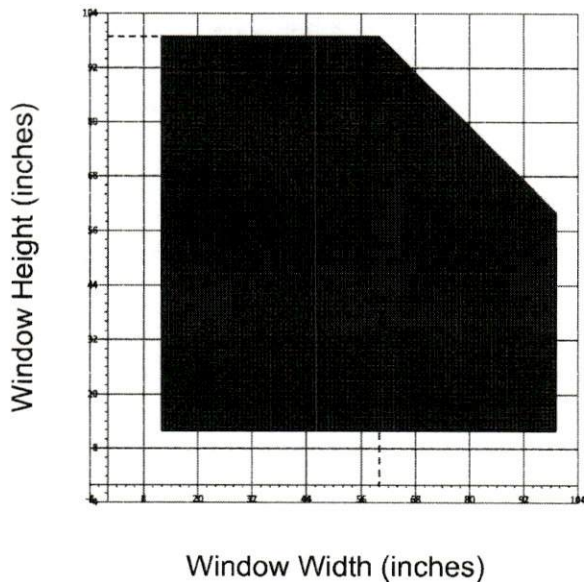


WINCO RESERVES THE RIGHT TO MODIFY OR CHANGE INFORMATION WITHIN THIS BOOK WHEN DEEMED NECESSARY FOR PRODUCT IMPROVEMENT

Single Hung



Fixed



- Dashed line represents the gateway size window as tested by AAMA.
- All vent sizes are based upon 1" Insulated glass consisting of $\frac{1}{4}$ " glass - $\frac{1}{2}$ " air - $\frac{1}{4}$ " glass.
- Any vent size outside of the AAMA Gateway tested size may have reduced performance.
- Chart assumes the window has been installed in a properly prepared opening by a qualified installer.
- Individual job criteria such as: other glazing materials, specified wind load, and specific operating hardware; may enhance or restrict the chart.
- Minimum vent size is 14" x 14" with standard water leg sill.
- The chart is a general guideline for projected vent sizing, anything on the edge or outside of the range will need to be reviewed by Winco Engineering.

© WINCO WINDOW COMPANY, INC. 2020

4410 Series 4" Thermal Fixed & Single Hung Windows

Product Details - Vertical Stack - D4-201 / D4-229

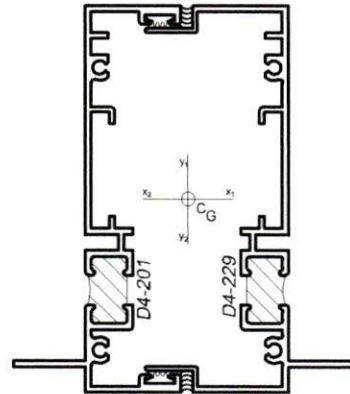


Note: Multiple configurations of this window system are available. Refer to the WINCO website for additional options or contact your local WINCO Sales Representative for information.

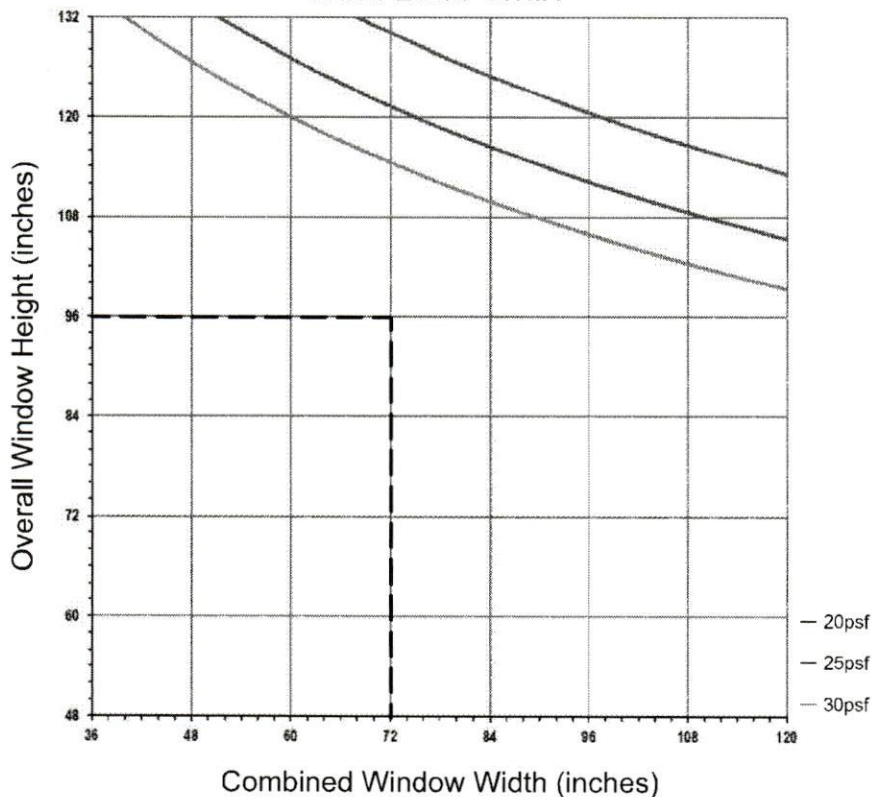
Combined Properties

	X-X	Y-Y
I	2.7013in ⁴	0.1837in ⁴
S	1.2365in ³	0.1648in ³

Maximum area = 40 ft²
Maximum Total Unit Weight
must not exceed 500 lbs.



Wind Load Chart



This chart can be used as a guideline for the preliminary structural evaluation of the mullion/stack shown. The chart is based on conservative engineering practices and the minimum result from either L/175 Deflection, $\frac{3}{4}$ " deflection, or 15 ksi outer fiber stress. The chart reflects the structural strength of 2 continuous window jambs running the full height of the opening. WINCO highly recommends consulting an engineer for any of the following circumstances:

- The window under consideration falls close too or on the design pressure line.
- Any rail exceeds 48" with a large (>16ft²) light of glass above.
- Any vent width exceeds 60".
- Window exceeds the maximum size shown.
- Window has multiple rails (>3).

WINCO RESERVES THE RIGHT TO MODIFY OR CHANGE INFORMATION WITHIN
THIS BOOK WHEN DEEMED NECESSARY FOR PRODUCT IMPROVEMENT

© WINCO WINDOW COMPANY, INC. 2020

4410 Series 4" Thermal Fixed & Single Hung Windows

Product Details - Vertical Stack - D4-201 / D4-420

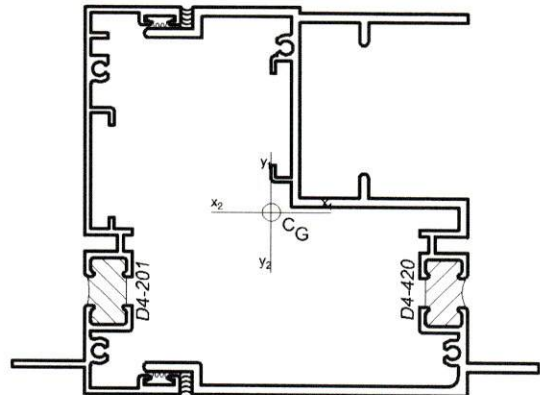


Note: Multiple configurations of this window system are available. Refer to the WINCO website for additional options or contact your local WINCO Sales Representative for information.

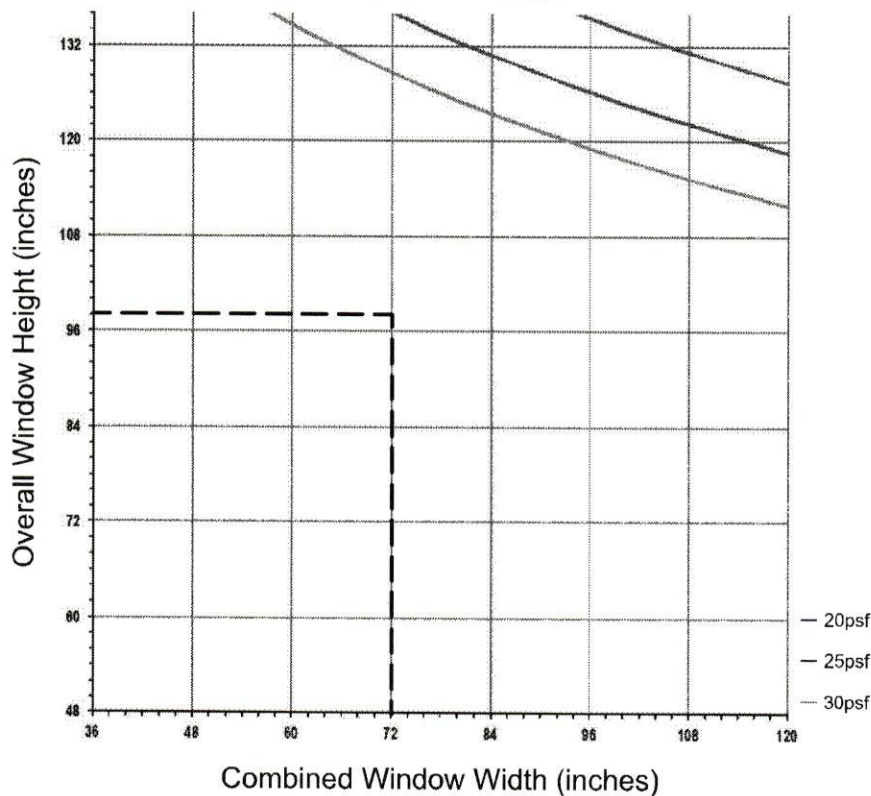
Combined Properties

	X-X	Y-Y
I	3.9083in ⁴	1.1207in ⁴
S	1.8131in ³	0.5463in ³

Maximum area = 40 ft²
Maximum Total Unit Weight
must not exceed 500 lbs.



Wind Load Chart



This chart can be used as a guideline for the preliminary structural evaluation of the mullion/stack shown. The chart is based on conservative engineering practices and the minimum result from either L/175 Deflection, $\frac{3}{4}$ " deflection, or 15 ksi outer fiber stress. The chart reflects the structural strength of 2 continuous window jambs running the full height of the opening. WINCO highly recommends consulting an engineer for any of the following circumstances:

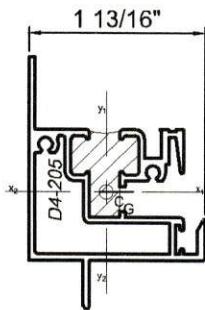
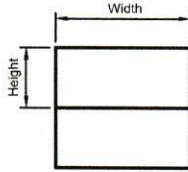
- The window under consideration falls close too or on the design pressure line.
- Any rail exceeds 48" with a large (>16ft²) light of glass above.
- Any vent width exceeds 60".
- Window exceeds the maximum size shown.
- Window has multiple rails (>3).

4410 Series 4" Thermal Fixed & Single Hung Windows

Product Details - D4-205 Rail

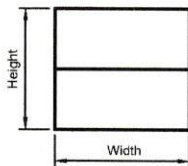


Note: Multiple configurations of this window system are available. Refer to the WINCO website for additional options or contact your local WINCO Sales Representative for information.

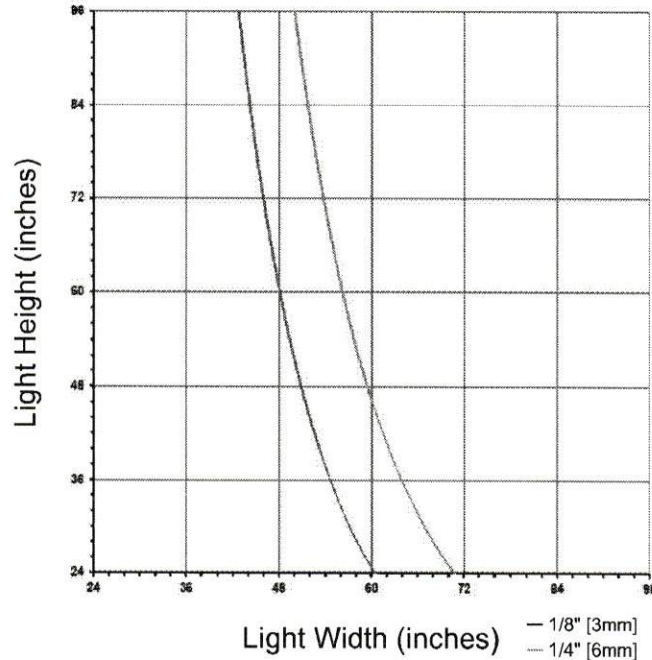


Section Properties

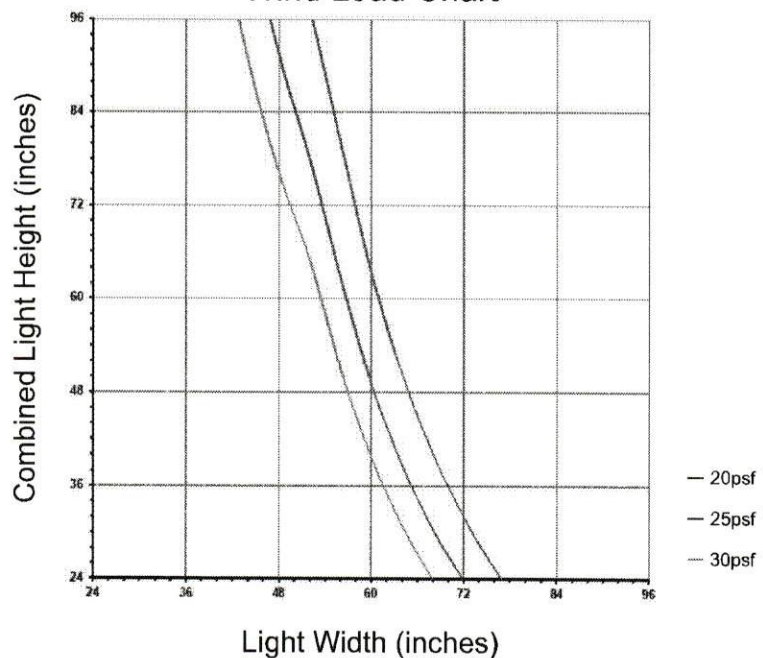
	X-X	Y-Y
I	0.2126in ⁴	0.2268in ⁴
S	0.1523in ³	0.2205in ³



Glass Dead Load Chart



Wind Load Chart



This chart can be used as a guideline for the preliminary structural evaluation of the Rail shown. The Dead Load chart is based on 1/4" - 1/2" - 1/4" I.G. and 0.090" deflection at 1/4 and 1/8 point blocking. The Wind Load Chart is based upon the minimum result from either L/175 deflection, 3/4" deflection, or 15 ksi outer fiber stress. The charts reflect the structural strength of only the Rail. WINCO highly recommends consulting an engineer for any of the following circumstances:

- The window under consideration falls close too or on the design pressure line.
- Any rail exceeds 48" with a large (>16ft²) light of glass above.
- I.G. make-up varies from the default.
- I.G. has additional blocking.

WINCO RESERVES THE RIGHT TO MODIFY OR CHANGE INFORMATION WITHIN THIS BOOK WHEN DEEMED NECESSARY FOR PRODUCT IMPROVEMENT

© WINCO WINDOW COMPANY, INC. 2020

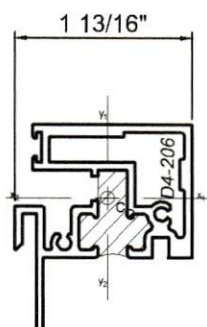
4410 Series 4" Thermal Fixed & Single Hung Windows

Product Details - D4-206 Rail



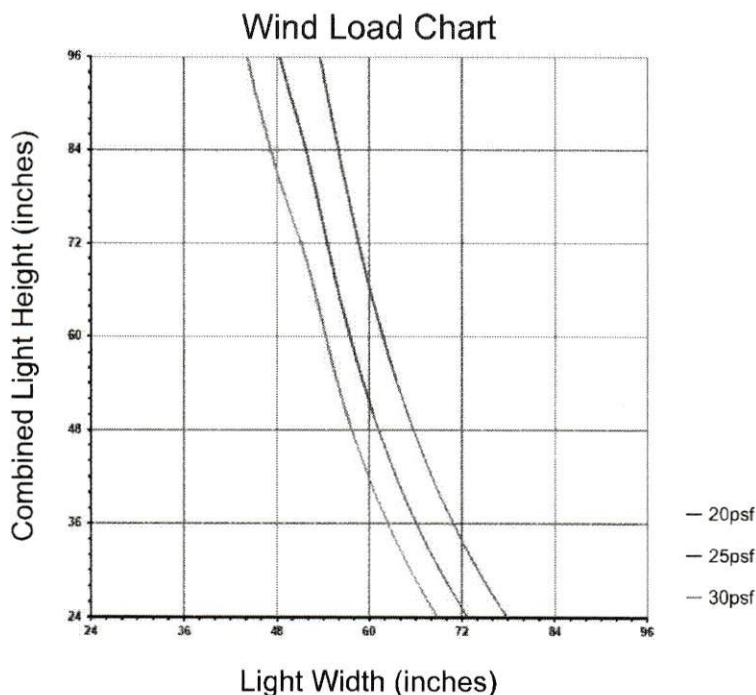
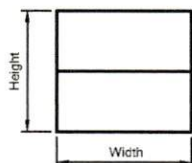
Note: Multiple configurations of this window system are available. Refer to the WINCO website for additional options or contact your local WINCO Sales Representative for information.

WINCO RESERVES THE RIGHT TO MODIFY OR CHANGE INFORMATION WITHIN THIS BOOK WHEN DEEMED NECESSARY FOR PRODUCT IMPROVEMENT



Section Properties

	X-X	Y-Y
I	0.2217 in ⁴	0.2814 in ⁴
S	0.1624 in ³	0.2931 in ³



This chart can be used as a guideline for the preliminary structural evaluation of the Rail shown. The Dead Load chart is based on $\frac{1}{4}$ " - $\frac{1}{2}$ " - $\frac{1}{4}$ " I.G. and 0.090" deflection at $\frac{1}{4}$ and $\frac{3}{8}$ point blocking. The Wind Load Chart is based upon the minimum result from either L/175 deflection, $\frac{3}{4}$ " deflection, or 15 ksi outer fiber stress. The charts reflect the structural strength of only the Rail. WINCO highly recommends consulting an engineer for any of the following circumstances:

- The window under consideration falls close too or on the design pressure line.
- Any rail exceeds 48" with a large ($>16\text{ft}^2$) light of glass above.
- I.G. make-up varies from the default.
- I.G. has additional blocking.

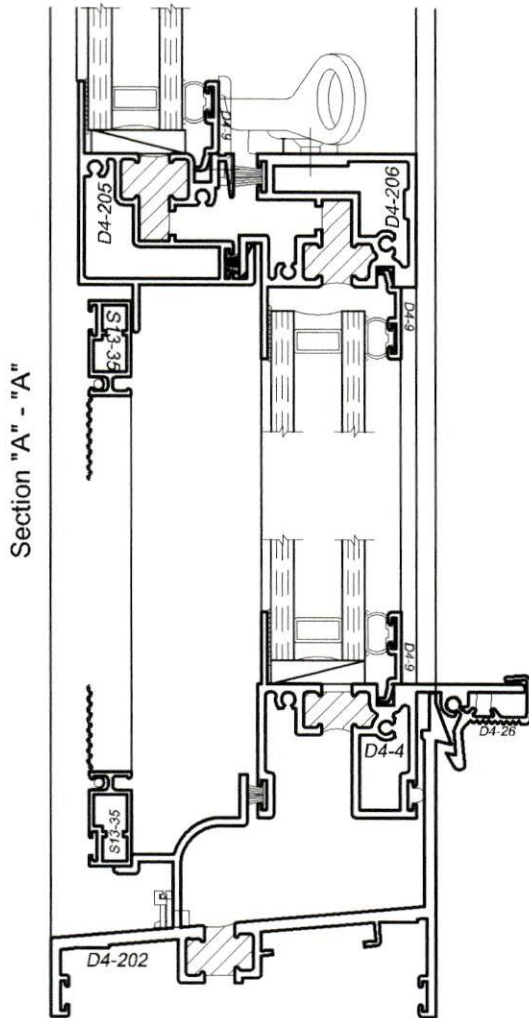
4410 Series 4" Thermal Fixed & Single Hung Windows

Product Details - Screen Options - Standard Fixed Screen

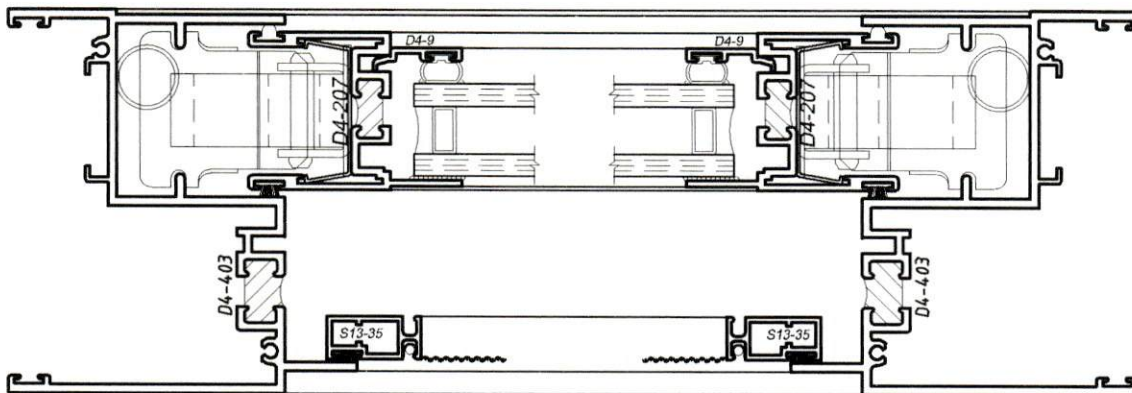
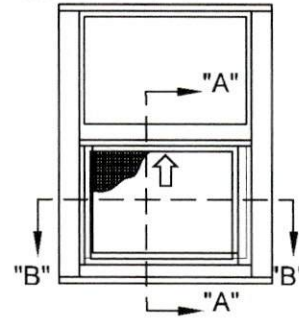


Note: Typical vent screen details shown. Winco reserves the right to alter the screen attachment detail due to job specific sizing and hardware. If you have specific screen applications you would like to see please contact your local Winco Sales Representative for more information.

WINCO RESERVES THE RIGHT TO MODIFY OR CHANGE INFORMATION WITHIN THIS BOOK WHEN DEEMED NECESSARY FOR PRODUCT IMPROVEMENT



All screen frames are fixed.



SCALE 6"=1'-0"